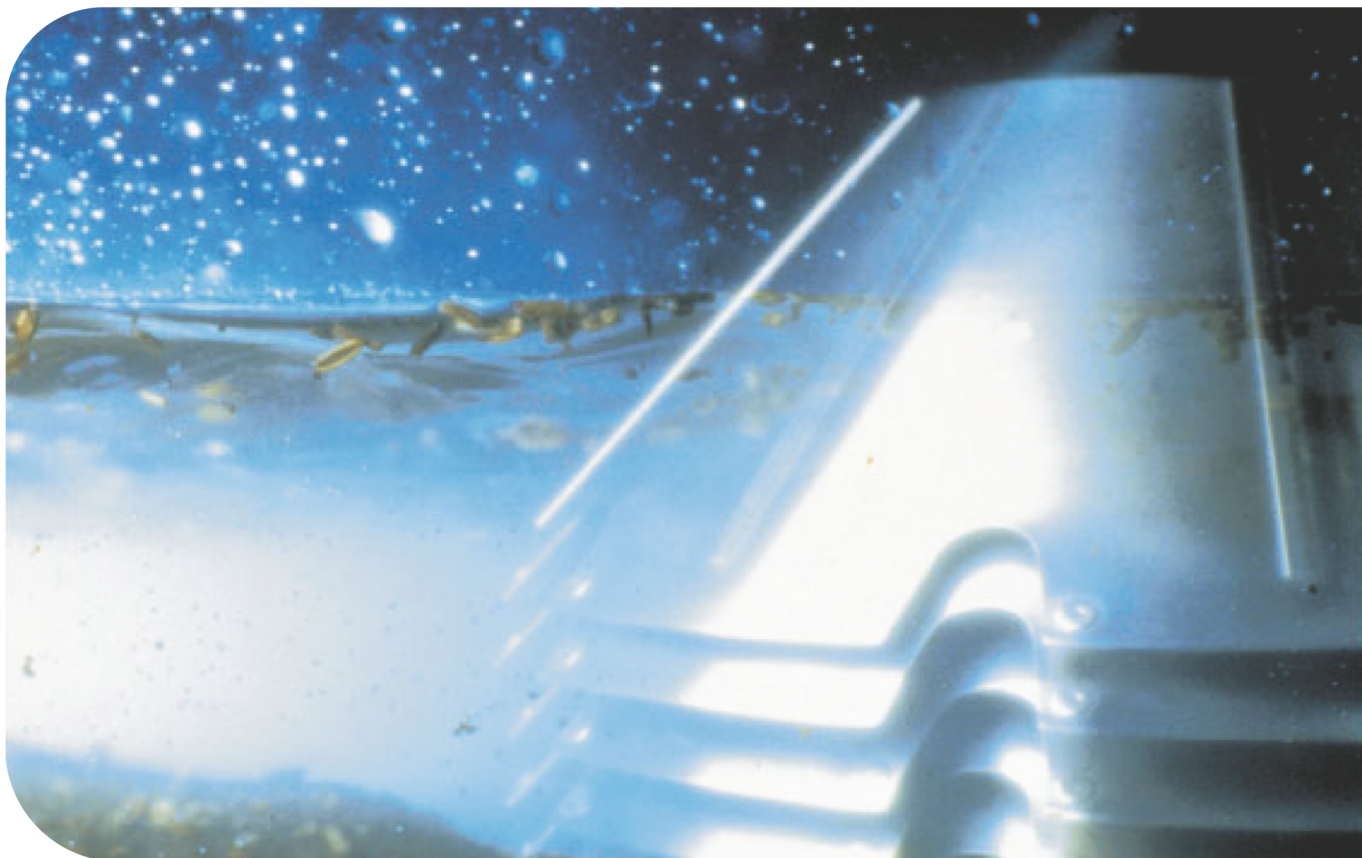


MAB 206S-24

MAB 206S-24

Spare parts catalogue, Reservdelaskatalog, Ersatzteilkatalog, Catalogue de pièces de rechange, Varaosaluettelo, Catalogue de piezas de recambio, Каталог запасных частей, Catalogo parti di ricambio, Reservdelaskatalog, Catalogo de peças sobressalentes, Καταλογος ανταλλακτικων, Reserveonderdelen-catalogus, 备件目录



Config No.
Book No. 9033313 02 Rev. 3
Product No.
Specification No. 881240-22-15/3

Published By:
Alfa Laval Technologies AB
Box 74
SE-221 00 Lund, Sweden
+46 46 366500

Original instructions

© Alfa Laval Corporate AB 2024-06-26

This document and its contents are subject to copyrights and other intellectual property rights owned by Alfa Laval Corporate AB. No part of this document may be copied, re-produced or transmitted in any form or by any means, or for any purpose, without Alfa Laval Corporate AB's prior express written permission. Information and services provided in this document are made as a benefit and service to the user, and no representations or warranties are made about the accuracy or suitability of this information and these services for any purpose. All rights are reserved.

Contents

1	Read this first	5
1.1	General information	7
1.2	Translation list	21
2	Frame with collecting cover	26
2.1	Revolution counter	30
2.2	Guard	32
2.3	Inspection box	34
2.4	Lifting device	36
2.5	Bowl spindle	38
2.6	Driving device horizontal	40
2.7	Connecting housing	42
2.8	Connecting piece	44
2.9	Connecting piece	46
2.10	Driving device horizontal with built-in pump	48
3	Separator bowl, caulks 0,5 mm	50
4	Parts for motor mounting, Ø 230/250 mm	52
5	Parts for motor mounting, NEMA standard	54
6	Set of fittings for machine without pump	56
6.1	Connecting hose	58
7	Set of fittings for machine with pump	60
8	Set of plates	62

9	Feed pump	64
10	Set of tools	66
11	Intermediate service kit	68
12	Major service kit	70
13	3-years service kit	72
14	Service kit for pump	74
15	Ball bearing kit	76
16	Cross reference list	78

1 Read this first



en

The name plate - the guide for finding the correct spare part numbers. See also Warnings in chapter "1.1 General information" on page 7.

sv

Maskinskytten - en guide till det rätta reservdelsnumret. Se även Varningar i kapitel "1.1 Allmän information" på sidan 8.

de

Das Typenschild - ein Hinweis zur korrekten Ersatzteilnummer. Siehe auch Warnhinweise in Kapitel "1.1 Allgemeine Informationen" auf Seite 9.

fr

La plaque de la machine - un guide pour trouver le numéro de pièce de rechange correct. Voir à ce propos les mises en garde du chapitre "1.1 Informations générales" en page 10.

es

La placa-marca de la máquina - guía del número correcto del repuesto. Consulte también las Advertencias del capítulo "1.1 Información General" en la página 11.

ru

Фирменная табличка машины — указатель правильного номера запасной части. См. также предупреждения в главе "1.1 Общие сведения" на странице 12.

it

La targhetta della macchina - guida al corretto numero dei ricambi. Vedere anche le Avvertenze nel capitolo "1.1 Informazioni generali" a pagina 13.

pt

A placa do fabricante da máquina - um guia do número correto das partes sobressalentes. Consultar também os Avisos no capítulo "Informação Geral 1.1" da página 14.

fi

Konekilpi - opastin oikeaan varaosanumeroon. Katso myös kappaleessa 1.1 sivulla 15 olevaa kohtaa "Yleiset tiedot".

el

Η πινακίδα της μηχανής είναι ο οδηγός του σωστού ανταλλακτικού. Δείτε επίσης τις προειδοποιήσεις του κεφαλαίου "1.1 ΓΕΝΙΚΕΣ ΠΛΗΡΟΦΟΡΙΕΣ", στη σελίδα 16.

nl

Het gegevensplaatje - een wegwijzer naar het juiste onderdeelnummer. Zie ook Waarschuwingen in hoofdstuk "1.1 Algemene informatie", op blz. 17.

da

first Typeskiltet - en guide til det rette reservedelsnummer. Se også under Advarsler i kapitel "1.1 Generelle oplysninger" på side 18.

zh

铭牌：用于查找正确备件号的参考。另请参见 19 页“1.1 概要信息”一章中的“警告”。

hu

Az adattábla – a segítségével megtalálhatók a megfelelő pótalkatrészsorszámok. Lásd még: Figyelmeztetések az „1.1. Általános tudnivalók” fejezetben (20. oldal).

1.1 General information

en

Safeguard your commitment to quality by always using genuine Alfa Laval spare parts.

Remember, Alfa Laval cannot accept responsibility for the failure of separator equipped with non-original spare parts. We guarantee the quality and reliability of our products.



WARNING B

When changing certain parts in the separator bowl assembly, the vibration level may increase. This can result in shorter life time of components like rolling bearings and gears. If severe unbalance occurs, the rotating bowl assembly can come into contact with the frame causing damage to equipment and injuries to personnel. It is strongly recommended that the exchange of parts is **supervised by an Alfa Laval service engineer**. Alfa Laval assumes no liability for damage to property or injury to personnel resulting from unauthorized installation of those parts.



WARNING C

Certain bowl parts carry milling marks from the balancing of the complete separator bowl. These parts must not be replaced without rebalancing the complete bowl. The rebalancing should be made by an Alfa Laval service shop.

sv

Följ ditt kvalitetstänkande genom att endast använda Alfa Laval originalreservdelar.

Kom ihåg att Alfa Laval inte tar något ansvar för fel på en separator som innehåller icke-originaldelar. Vi garanterar kvaliteten och driftsäkerheten hos våra egna produkter.



VARNING B

Om vissa delar i separatorkulan byts ut, kan vibrationsnivån komma att öka. Detta kan i sin tur leda till förkortad livslängd på t.ex. lager och växlar. Om kraftiga vibrationer uppstår, kan den roterande kulan komma att slå i stativets delar, vilket kan medföra allvarlig maskin- och personskada. Det är därför av stor vikt att utbyte av kulans delar **övervakas av en serviceingenjör från Alfa Laval**. Alfa Laval tar inget ansvar för maskin- eller personsador som kan uppkomma på grund av att delar bytts ut av icke auktoriserad personal.



VARNING C

Vissa av separatorkulans delar har urfrästa spår som resultat av balansering av hela kulan. Dessa delar kan inte bytas ut utan att en ombalansering av kulan görs. För att bästa resultat ska uppnås, ska den kompletta kulan sändas till en Alfa Laval serviceverkstad för ombalansering.

de

Sichern Sie sich Ihren Anspruch auf Qualität durch ausschließliche Verwendung von original Alfa Laval Ersatzteilen. Beachten Sie bitte, daß Alfa Laval keine Verantwortung für den Ausfall eines Separators übernimmt, der mit Nicht-Originalteilen ausgestattet ist. Wir garantieren für die Qualität und Zuverlässigkeit unserer Produkte.

**WARNUNG B**

Durch den Austausch bestimmter Teile in der Separatortrommel-Baugruppe, kann ihr Schwingungspegel steigen. Dies kann zu einer kürzeren Lebensdauer von Teilen, wie z.B. Wälzlager und Getrieben, führen. Bei einer schweren Unwucht kann die rotierende Trommelbaugruppe in Kontakt mit dem Gestell kommen, was zu Beschädigungen der Ausrüstung oder Personenverletzungen führen kann. Es wird dringend empfohlen, **den Austausch von einem Alfa Laval Service-Ingenieur beaufsichtigen zu lassen**. Alfa Laval übernimmt keine Haftung für eine Gerätebeschädigung oder Personenverletzung aufgrund einer ungenehmigten Montage dieser Teile.

**WARNUNG C**

Bestimmte Trommelteile haben Fräsmarken vom Auswuchten der kompletten Separatortrommel. Diese Teile dürfen nicht ohne eine Neuauswuchtung der kompletten Trommel ausgetauscht werden. Die Neuauswuchtung sollte in einer Alfa Laval Service-werkstatt erfolgen.

fr

Respectez votre engagement de qualité en utilisant toujours des pièces de rechange d'origine Alfa Laval.

Attention, Alfa Laval décline toute responsabilité en cas de panne d'un séparateur équipé de pièces de rechange qui ne sont pas d'origine. Nous garantissons la qualité et la fiabilité de nos produits.



AVERTISSEMENT B

Le remplacement de certaines pièces du bol du séparateur risque d'augmenter le niveau de vibrations, et donc de réduire la durée de vie des composants tels que les paliers à roulements et les engrenages. En cas de déséquilibre trop important, le bol en rotation risque d'entrer en contact avec des pièces du bâti, provoquant ainsi des détériorations de l'équipement et des blessures du personnel. Nous vous incitons fortement à faire réaliser le remplacement **sous la surveillance d'un technicien de maintenance Alfa Laval**. Alfa Laval n'assume aucune responsabilité en cas de détérioration du matériel ou de blessure du personnel résultant d'une installation non approuvée de ces pièces.



AVERTISSEMENT C

Certaines pièces du bol présentent des marques de repérage effectuées lors de l'équilibrage du bol du séparateur. Il ne faut pas remplacer ces pièces sans avoir au préalable procédé à un nouvel équilibrage de l'ensemble du bol. Cet équilibrage doit être réalisé dans un atelier de réparation Alfa Laval.

es

Proteja su compromiso con la calidad utilizando siempre repuestos originales Alfa Laval.

Recuerde que Alfa Laval no acepta ninguna responsabilidad por el fallo de una separadora equipada con repuestos no originales. Alfa Laval garantiza la calidad y la fiabilidad de sus productos.



ADVERTENCIA B

Cuando se cambian ciertas piezas del conjunto del rotor de la separadora, puede que se produzca un aumento del nivel de vibraciones, lo que puede provocar un desgaste de algunos componentes, como los rodamientos de rodillos y los engranajes. Si se produce un desequilibrio importante, el conjunto del rotor en movimiento puede rozar con el bastidor, causando serios daños al equipo y al personal. Se recomienda encarecidamente que el cambio sea **supervisado por un técnico de mantenimiento de Alfa Laval**. Alfa Laval no se hace responsable de los daños materiales o daños personales provocados por la instalación no autorizada de esas piezas.



ADVERTENCIA C

Algunas piezas del rotor llevan marcas estampadas para el equilibrado del rotor completo de la separadora. Siempre que se cambien estas piezas se debe equilibrar de nuevo todo el rotor, operación que debe ser realizada por un experto de un centro de servicio Alfa Laval.

ru

Для обеспечения качества работы вашего оборудования используйте только подлинные запасные детали компании Alfa Laval.

Помните: компания Alfa Laval не несет ответственность за нарушения работы сепаратора, на котором установлены не подлинные запасные детали. Мы гарантируем качество и надежность нашей продукции.



ПРЕДУПРЕЖДЕНИЕ В

В случае замены некоторых частей устройства барабана сепаратора может повыситься уровень вибрации. Это может привести к сокращению срока службы компонентов, таких как подшипники и привод. В случае значительного дисбаланса, устройство вращающегося барабана может войти в контакт со станиной, что приведет к серьезному повреждению оборудования и травмам обслуживающего персонала. Настоятельно рекомендуется, чтобы замена была **проконтролирована инженером по обслуживанию компании Alfa Laval**. Компания Alfa Laval не несет никакой ответственности за повреждения собственности или травмы персонала в результате неразрешенной установки этих деталей.



ПРЕДУПРЕЖДЕНИЕ С

На некоторых частях барабана поставлены отметки после балансировки барабана сепаратора полностью. Эти части не могут быть заменены без повторной балансировки всего устройства барабана сепаратора. Повторная балансировка должна быть произведена в ремонтном центре Alfa Laval.

it

Salvaguardate la qualità del vostro separatore utilizzando sempre ricambi originali Alfa Laval.

Ricordate che la Alfa Laval non accetta alcuna responsabilità in caso di difetti al separatore dovuti all'utilizzo di ricambi non originali. La Alfa Laval garantisce la qualità e l'affidabilità esclusivamente dei propri prodotti.



AVVERTENZA B

In seguito alla sostituzione di alcune parti del tamburo del separatore, il livello di vibrazioni può aumentare. Questo può comportare la riduzione della vita utile di componenti quali cuscinetti a rulli ed ingranaggi. In caso di elevato spostamento, il tamburo può entrare a contatto con le parti del telaio provocando seri danni all'attrezzatura e lesioni alle persone. Si raccomanda caldamente di far **controllare la sostituzione da un tecnico di assistenza Alfa Laval**. La Alfa Laval non assume alcuna responsabilità per danni alle cose o lesioni al personale dovuti all'installazione non autorizzata delle suddette parti.



AVVERTENZA C

Alcune parti del tamburo dipendono dal bilanciamento complessivo del tamburo del separatore. Le suddette parti non possono essere sostituite senza procedere ad un nuovo bilanciamento. Per ottenere i migliori risultati, rivolgersi ad un centro assistenza Alfa Laval per il ribilanciamento dell'intero gruppo.

pt

Preserve o seu compromisso com a qualidade utilizando sempre peças originais Alfa Laval.

Não se esqueça de que a Alfa Laval não assume quaisquer responsabilidades pela avaria dum separador que não esteja equipado com peças originais. Por isso, asseguramos a garantia da qualidade e fiabilidade dos nossos produtos.



AVISO B

Ao mudar determinadas peças no conjunto do rotor da separadora, poderá provocar um aumento da vibração. Tal poderá originar a redução do tempo de duração dos componentes, tais como rolamentos de roletes e engrenagens. Caso se verifique um desequilíbrio acentuado, o conjunto do rotor giratório poderá entrar em contacto com a estrutura, vindo a provocar danos no equipamento e ferimentos pessoais. Recomenda-se vivamente que a substituição de peças seja **vistoriada por um técnico de serviço da Alfa Laval**. A Alfa Laval não assume qualquer responsabilidade por danos em bens ou ferimentos pessoais resultantes da instalação não autorizada daquelas peças.



AVISO C

Determinadas partes do rotor contêm marcas de atrito do balanceamento do rotor do separador completo. Estas peças não devem ser substituídas sem reequilibrar o rotor completo. O reequilíbrio deve ser executado por uma centro de assistência Alfa Laval.

fi

Varmista käyttämiesi tuotteiden laatu käyttämällä aina aitoja ja alkuperäisiä Alfa Laval -varaosia.

Muista, ettei Alfa Laval voi vastata sellaisen separaattorin toimintahäiriöstä, jossa on käytetty muita kuin alkuperäisiä varaosia. Me takaamme omien tuotteidemme laadun ja luotettavuuden.



VAROITUS B

Kun separaattorin kuula-asennelman tiettyjä osia vaihdetaan, sen tärinän taso voi kasvaa. Tämä voi johtaa joidenkin osien, kuten vierintälaakereiden ja hammasvaihteiden, käyttöiän lyhenemiseen. Jos asennelma joutuu pahasti epätasapainoon, pyörivä kuula-asennelma voi koskettaa runkoa ja aiheuttaa laite- ja henkilövahinkoja. Suosittelemme, että **Alfa Lavalin huoltoinsinööri valvoo** vaihtoa. Alfa Laval ei ota vastuuta omaisuudelle tai henkilökunnalle aiheutuneista vahingoista, mikäli ne johtuvat näiden osien väärin suoritetusta asennuksesta.



VAROITUS C

Tietyissä kuulan osissa on merkinnät koko separaattorikuulan tasapainotuksesta. Näitä osia ei saa vaihtaa ilman, että koko kuula tasapainotetaan. Tasapainotus on annettava Alfa Laval -korjaamon hoidettavaksi.

el

Διασφαλίστε τη δέσμευσή σας για ποιότητα χρησιμοποιώντας πάντοτε γνήσια ανταλλακτικά Alfa Laval.

Σας υπενθυμίζουμε ότι η Alfa Laval δεν αναλαμβάνει ευθύνη για τη βλάβη διαχωριστήρα που δεν είναι εξοπλισμένος με αυθεντικά ανταλλακτικά. Εγγυώμαστε την ποιότητα και την αξιοπιστία των προϊόντων μας.



ΠΡΟΣΟΧΗ Β

Όταν αλλάζετε ορισμένα εξαρτήματα στο σύστημα του τυμπάνου του διαχωριστήρα, η στάθμη κραδασμών μπορεί να αυξηθεί. Αυτό μπορεί να έχει σαν αποτέλεσμα μικρότερη διάρκεια ζωής των εξαρτημάτων, όπως ρουλεμάν και γρανάζια. Σε περίπτωση σοβαρής έλλειψης ζυγοστάθμισης, το περιστρεφόμενο σύστημα του τυμπάνου μπορεί να έλθει σε επαφή με το πλαίσιο, προκαλώντας ζημιές στο μηχάνημα και τραυματισμό του προσωπικού. **Οι οποιοσδήποτε αλλαγές εξαρτημάτων πρέπει να γίνονται υπό την επίβλεψη μηχανικού της Alfa Laval.** Η Alfa Laval δεν φέρει καμία ευθύνη για υλικές ζημιές ή για τραυματισμό του προσωπικού λόγω τοποθέτησης αυτών των εξαρτημάτων από μη εξουσιοδοτημένα άτομα.



ΠΡΟΣΟΧΗ C

Ορισμένα εξαρτήματα του τυμπάνου φέρουν ίχνη φρεζαρίσματος από τη ζυγοστάθμιση ολόκληρου του συστήματος του τυμπάνου του διαχωριστήρα. Αυτά τα εξαρτήματα δεν πρέπει να αντικατασταθούν χωρίς να ξαναγίνει ζυγοστάθμιση ολόκληρου του συστήματος του τυμπάνου του διαχωριστήρα. Η επαναζυγοστάθμιση πρέπει να γίνει σε κάποιο από τα επισκευαστικά κέντρα της Alfa Laval.

nl

Doe geen concessies aan kwaliteit en gebruik altijd originele Alfa Laval-reserveonderdelen.

Wij wijzen u erop, dat Alfa Laval geen verantwoordelijkheid kan aanvaarden voor defecten aan een separator die is uitgerust met nietoriginele reserveonderdelen. Wij garanderen de kwaliteit en de betrouwbaarheid van onze producten.



WAARSCHUWING B

Als er bepaalde onderdelen van de separatortrommel worden vervangen, kan het trillingsniveau veranderen. Dit kan leiden tot een verkorte levensduur van onderdelen als rollagers en tandwielen. Als er sprake is van een ernstige mate van onbalans, kan de roterende trommel in contact komen met het frame, wat kan leiden tot ernstige schade aan goederen of tot persoonlijk letsel. Het is dan ook ten sterkste aan te raden om onderdelen te laten vervangen **onder supervisie van een onderhoudstechnicus van Alfa Laval**. Alfa Laval aanvaardt geen enkele aansprakelijkheid voor schade aan goederen of persoonlijk letsel als gevolg van onoordeelkundige installatie van die onderdelen.



WAARSCHUWING C

Op bepaalde onderdelen van de trommel zitten freesmarkeringen van het uitbalanceren van de gehele separatortrommel. Deze onderdelen mogen niet worden vervangen zonder dat de gehele trommel opnieuw wordt uitgebalanceerd. Het opnieuw uitbalanceren moet gebeuren in een onderhoudswerkplaats van Alfa Laval.

da

Beskyt din investering i kvalitet ved altid at anvende originale reservedele fra Alfa Laval.

Husk at Alfa Laval påtager sig intet ansvar for fejl i separatorer, der er udstyret med uoriginale reservedele. Vi indestår for vore produkters kvalitet og driftssikkerhed.



ADVARSEL B

Ved udskiftning af visse dele i separatkuglen, kan vibrationsniveauet blive forøget. Dette kan forkorte levetiden for komponenter som kuglelejer og tandhjul. I tilfælde af kraftige vibrationer kan den roterende separatkugle komme i kontakt med rammedele, hvilket kan medføre alvorlig beskadigelse af udstyr og personskade. Det anbefales på det kraftigste, at udskiftningen sker **under tilsyn af en servicetekniker fra Alfa Laval**. Alfa Laval påtager sig intet ansvar for ting- eller personskade som følge af ikke-autoriseret montering af disse dele.



ADVARSEL C

Visse kugledele er forsynet med mærker fra afbalanceringen af den samlede separatkugle. Ved udskiftning af disse dele skal der foretages en ny afbalancering af den samlede kugleenhed. Afbalanceringen bør foretages af et Alfa Laval-servicecenter.

zh

请始终使用阿法拉伐真品备件以保证您产品的质量。

请注意，阿法拉伐对使用非原装备件的分离设备的故障不承担责任。我们保证我们产品的质量与可靠性。



警告 B

在更换分离器转鼓装置的某些部件后，振动水平可能会升高。这可能会导致滚动轴承和齿轮等部件的寿命缩短。如果出现严重不平衡状态，转鼓装置可能会碰到框架，导致设备损坏甚至人员伤害。强烈建议由阿法拉伐服务工程师主持部件的更换。对于非授权安装的此类部件导致的财产损失和人身伤害，阿法拉伐不承担责任。



警告 C

某些转鼓部件带有整个分离设备转鼓平衡部分的研磨痕迹。在未重新校准整个转鼓的平衡前，不得更换这些部件。平衡校准应由阿法拉伐服务点进行。

hu

Miniszeri elkötelezettségének megfelelően mindig eredeti Alfa Laval pótalkatrészeket használjon.

Az Alfa Laval nem vállal felelősséget a nem eredeti pótalkatrészekkel felszerelt szeparátor meghibásodásáért. A saját termékeink minőségét és megbízhatóságát garantáljuk.



B. FIGYELMEZTETÉS

A szeparátor dobszerelvénye bizonyos alkatrészeinek cseréje esetén emelkedhet a vibráció szintje. Ez lerövidítheti egyes komponensek, például a görgőcsapágyak és a fogaskerekek élettartamát. Súlyos kiegyensúlyozatlanság esetén a forgó dobszerelvény hozzáérhet a kerethez, a berendezés károsodását és személyi sérülést okozva. Az alkatrészek cseréjét komolyan javasolt az **Alfa Laval szervizmérnökének felügyelete** mellett végezni. Az Alfa Laval nem vállal felelősséget az alkatrészek jogosulatlan beépítése miatt bekövetkező vagyoni kárért vagy személyi sérülésért.



C. FIGYELMEZTETÉS

A dob bizonyos alkatrészein bemart jelek láthatók az egész szeparátordob kiegyensúlyozásához. Ilyen alkatrész cseréje esetén az egész dobot újból ki kell egyensúlyozni. Az újbóli kiegyensúlyozással egy Alfa Laval m helytbízzon meg.

1.2 Translation list

Översättningslista
Übersetzungsliste
Liste de traduction
Lista de traducciones

en	sv	de	fr	es
Part no.	Reservdelsnummer	Teil-Nr.	Numéro de pièce	Pieza No.
Qty	Antal	Anzahl	Quantité	Cantidad
Description	Benämning	Bezeichnung	Dénomination	Descripción
Notes	Anmärkningar	Anmerkungen	Remarques	Notas
Machine type	Maskintyp	Maschinentyp	Type de machine	Tipo de máquina
Product no.	Produktnr	Produktnummer	Numéro de produit	Número de producto
Machine unit description	Maskinblocksbenämning	Bezeichnung des Maschinenblocks	Dénomination de partie de machine	Descripción de sección de la máquina
Machine unit no.	Maskinblocksnr	Maschinenblock Nr.	Partie de machine n°	No. de sección de máquina
Subassembly description	Undergruppsbenämning	Bezeichnung der Untergruppe	Dénomination de sous-ensemble	Descripción de subconjunto
Subassembly no.	Undergruppsnr	Untergruppe Nr.	N° de sous-ensemble	Número de subconjunto
See page	Se sidan	Siehe Seite	Voir page	Véase la página
Fig. ref.	Figurhänvisning	Bildhinweise	Réf. de fig.	Referencia de figura
Product name	Produktnamn	Produktname	Nom du produit	Nombre del producto
Exchange necessitates rebalancing of bowl	Utbyte nödvändiggör ombalansering av kulan	Austausch erfordert Wiederauswuchtung der Trommel	Le remplacement nécessite le rééquilibrage du bol	El racmbio requiere el reequilibrado del rotor
See separate spare parts list	Se separat reservdelslista	Siehe separate Ersatzteilliste	Voir liste séparée des pièces de rechange	Véase la lista de piezas separada
Not delivered as spare part	Leveras ej som reservdel	Nicht als Ersatzteil geliefert	Non livré comme pièce de rechange	No se entrega como pieza de recambio

Словарь перевода
Lista traduzioni
Lista para tradução
Käännösluettelo

en	ru	it	pt	fi
Part no.	Деталь №	Nr. parte	Numero de peça	Varaosanumero
Qty	Кол—во	Quantita	Quantidade	Lukumäärä
Description	Наименование	Descrizione	Descricao	Nimitys
Notes	Примечания	Note	Notas	Huomautuksia
Machine type	Машина типа	Tipo macchina	Tipo de maquina	Konetyyppi
Product no.	Артикул №	Nr.prodotto	No. do produto	Tuotteen no
Machine unit description	Наименование блока машины	Descrizione unita macchina	Descricao da unidade da maquina	Koneenosan nimitys
Machine unit no.	Блок машины №	Nr. unita macchina	Numero de unidade da maquina	Koneenosan no
Subassembly description	Наименование группы	Descrizione sottogruppo	Descricao do subconjunto	Alaryhmän nimitys
Subassembly no.	Группа №	Nr. sottogruppo	Número de subconjunto	Alaryhmän no
See page	См. страницу	Vedi pagina	Véase la página	Ks sivu
Fig. ref.	Ссылка на эскиз	Rif. fig.	Referencia de figura	Kuvaviite
Product name	Наименование артикула	Nome prodotto	Nombre del producto	Tuotteen nimi
Exchange necessitates rebalancing of bowl	Замена требует балансировки барабана	La sostituzione comporta la equilibratura del tamburo	El racmbio requiere el reequilibrado del rotor	Vaihdettaessa kuula tasapainoitettava uudelleen
See separate spare parts list	См. отдельный перечень запасных частей	Vedi lista separata delle parti di ricambio	Véase la lista de piezas separada	Katso erillistä varaosaluettelo
Not delivered as spare part	Не поставлена вместе с запасными частями	Non fornito come parte di ricambio	No se entrega como pieza de recambio	Ei toimiteta varaosana

ΓΛΩΣΣΑΡΙ
Vertaallijst
Oversættelseliste
翻译列表、

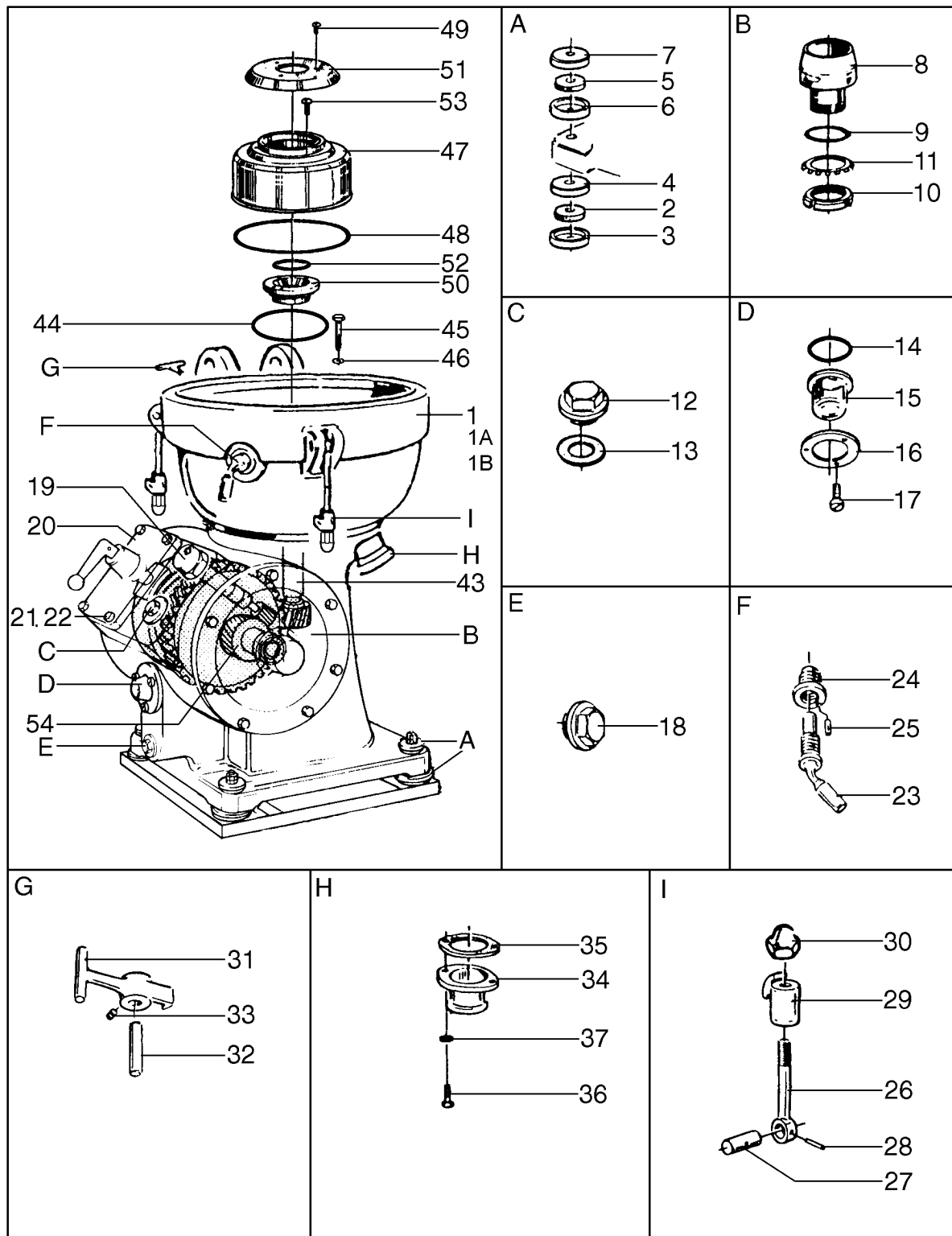
en	el	nl	da	zh
Part no.	Λριθμός ανταλλακτικού	Onderdeelnr.	Reservedelsnummer	部件号
Qty	Σύνολο	Hoeveelheid	Antal	数量
Description	Περιγραφή	Beschrijving	Betegnelse	说明
Notes	Παρατηρήσεις	Opmerkingen	Bemaerkninger	注释
Machine type	Τύπος μηχανήματος	Machinetype	Maskintype	机器类型
Product no.	Αριθμός προϊόντος	Produktnr.	Produktnr.	产品编号
Machine unit description	Περιγραφή συγκροτήματος μηχανής	Machineblokbenaming	Maskinbetegnelse	机器说明
Machine unit no.	Αριθμός συγκροτήματος μηχανής	Machineblokbenamning	Maskinnr.	机器部件号
Subassembly description	Περιγραφή υποσυγκροτήματος	Subgroepbenamning	Undergruppsbetegnelse	子装置说明
Subassembly no.	Αριθμός υποσυγκροτήματος	Subgroeprnr.	Undergruppenr.	子装置编号
See page	Βλέπε σελίδα	Zie blz.	Se side	请参阅页
Fig. ref.	Παραπομπή σε εικόνα	Afb. ref.	Figurhenviisning	图片参考
Product name	Ονομασία προϊόντος	Produktnaam	Produktnavn	产品名
Exchange necessitates rebalancing of bowl	Ανταλλαγή απαιτεί επαναρρύθμιση ισορροπίας του τύμπανου.	Vervangning vereist herbalanceren van de kogel	Udskriftning kraever afbalcering af kuglen	更换前应校准转鼓平衡
See separate spare parts list	Βλέπε ειδική λίστα ανταλλακτικών	Vervangning vereist van de kogel	Se spaat reservedelsliste	参见备件清单
Not delivered as spare part	Δεν παραδίδεται ως ανταλλακτικό	Niet geleverd als reserveonderdeel	Levereres ikke som reservedel	未作为备件提供

Fordítási lista

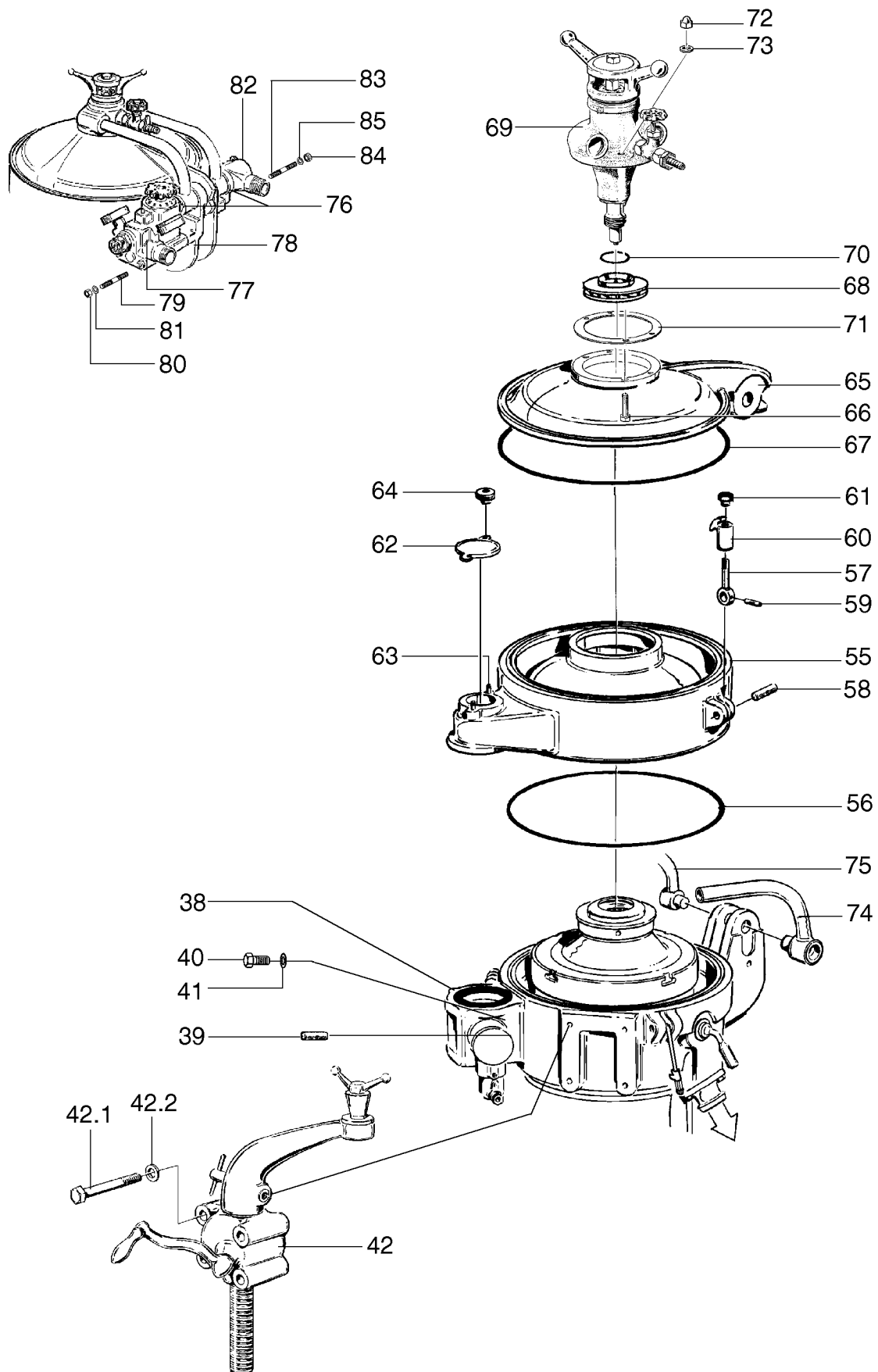
en	hu
Part no.	Cikkszám
Qty	Menny.
Description	Leírás
Notes	Megjegyzés
Machine type	Gép típusa
Product no.	Termékszám
Machine unit description	Gépegység leírása
Machine unit no.	Gépegység száma
Subassembly description	Részegység leírása
Subassembly no.	Részegység száma
See page	Lásd a következ oldalt:
Fig. ref.	Ábra. ref.
Product name	Termék neve
Exchange necessitates rebalancing of bowl	Csere esetén a dobot ki kell egyensúlyozni.
See separate spare parts list	Lásd a külön pótalkatrészjegyzéket.
Not delivered as spare part	Nem szállítjuk pótalkatrészként.

2 Frame with collecting cover

			Machine unit number or Subassembly description				
Ref	Part No	Description	549884- -01 -02 -05 -06				Notes
			Quantity				
		50 Hz	↓				
		60 Hz		↓			
		50 Hz with built-in pump			↓		
		60 Hz with built-in pump				↓	
1	519682 81	Separator frame	1	1	1	1	
2	65232	Rectangular ring	4	4	4	4	Delivered loose
3	71123	Cap	4	4	4	4	Delivered loose
4	71124	Cap	4	4	4	4	Delivered loose
5	65235	Rectangular ring	4	4	4	4	Delivered loose
6	71125	Cap	4	4	4	4	Delivered loose
7	71126	Cap	4	4	4	4	Delivered loose
8	518431 02	Bushing	1	1	1	1	
9	66554	O-ring	1	1	1	1	
10	67477	Round nut	1	1	1	1	
11	38723	Lock washer	1	1	1	1	
12	520529 02	Plug	1	1	1	1	
13	518470 01	Gasket	1	1	1	1	
14	1104	Rectangular ring	1	1	1	1	
15	8859	Oil gauge glass	1	1	1	1	
16	9175	Fixing plate	1	1	1	1	
17	2211721 08	Screw	3	3	3	3	
18	526686 02	Plug	1	1	1	1	
19	526712 81	Revolution counter	1	1	1	1	See page 30
20	518475 81	Guard	1	1	1	1	See page 32
21	72933	Screw	4	4	4	4	
22	20758	Washer	4	4	4	4	
23	518409 01	Lock screw	2	2	2	2	
24	518408 01	Bushing	2	2	2	2	
25	222116 05	Slotted pin	2	2	2	2	
26	225415 41	Hinged bolt	3	3	3	3	
27	72680	Cylindrical pin with hole	3	3	3	3	
28	72474	Slotted pin	3	3	3	3	
29	548695 02	Clamping shoe	3	3	3	3	
30	536704 02	Cap nut	3	3	3	3	
31	519517 02	Blocking arm	1	1	1	1	
32	26472	Cylindrical pin	1	1	1	1	
33	72876	Screw	1	1	1	1	
34	518412 02	Outlet flange	1	1	1	1	
35	518479 01	Gasket	1	1	1	1	
36	2210941 17	Screw	2	2	2	2	
37	20758	Washer	2	2	2	2	
38	526753 80	Inspection box	1	1	1	1	See page 34
39	64731	Cylindrical pin	2	2	2	2	
40	2210947 16	Screw	2	2	2	2	
41	70492	Washer	2	2	2	2	
42	520534 86	Lifting device	1	1	1	1	See page 36
42.1	2210947 09	Screw	4	4	4	4	
42.2	70492	Washer	4	4	4	4	
43	526775 80	Bowl spindle	1		1		See page 38
43	526775 81	Bowl spindle		1		1	See page 38
44	223412 02	O-ring	1	1	1	1	

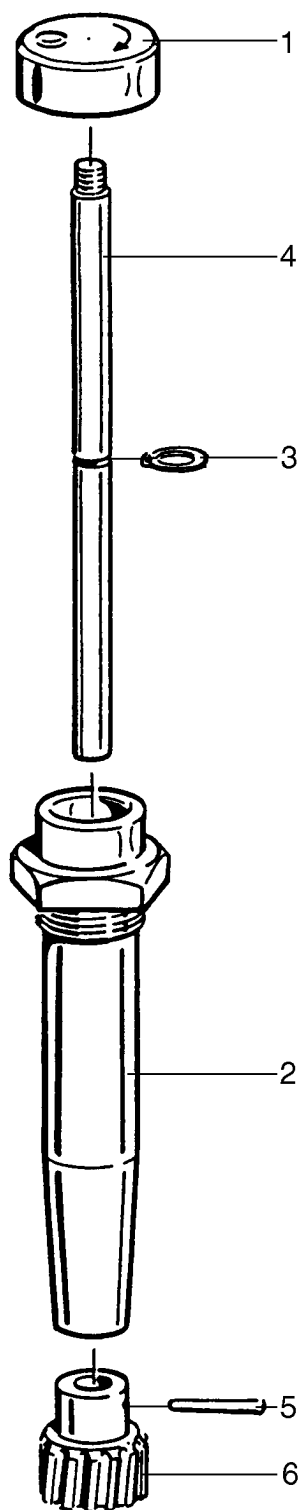


Ref	Part No	Description	Machine unit number or Subassembly description				Notes
			549884- -01	-02	-05	-06	
			Quantity				
		50 Hz	↓				
		60 Hz		↓			
		50 Hz with built-in pump			↓		
		60 Hz with built-in pump				↓	
45	2210947 04	Screw	3	3	3	3	
46	62094	Spring washer	3	3	3	3	
47	518457 01	Protecting guard	1	1	1	1	
48	223412 04	O-ring	1	1	1	1	
49	2211721 07	Screw	3	3	3	3	
50	518438 02	Protecting collar	1	1	1	1	
51	518458 01	Protecting plate	1	1	1	1	
52	64706	O-ring	1	1	1	1	
53	2211721 07	Screw	3	3	3	3	
54	549885 80	Driving device horizontal	1				See page 40
54	549885 81	Driving device horizontal		1			See page 40
54	549888 82	Driving device horizontal with built-in pump			1		See page 48
54	549888 83	Driving device horizontal with built-in pump				1	See page 48
55	519626 02	Collecting cover	1	1	1	1	
56	39099	O-ring	1	1	1	1	
57	225415 31	Hinged bolt	2	2	2	2	
58	72680	Cylindrical pin with hole	2	2	2	2	
59	72474	Slotted pin	2	2	2	2	
60	548695 02	Clamping shoe	2	2	2	2	
61	518376 01	Handwheel nut	2	2	2	2	
62	519577 02	Cover	1	1	1	1	
63	37547	Stud bolt	2	2	2	2	
64	71349	Hand-wheel	2	2	2	2	
65	519627 02	Top cover	1	1	1	1	
66	2210941 18	Screw	4	4	4	4	
67	39099	O-ring	1	1	1	1	
68	522883 82	Paring disc	1	1	1	1	
69	526543 80	Connecting housing	1	1	1	1	See page 42
70	223401 30	O-ring	1	1	1	1	
71	519607 01	Height adjusting ring	6	6	6	6	
72	221854 03	Cap nut	4	4	4	4	
73	20758	Washer	4	4	4	4	
74	519592 80	Elbow pipe	1	1	1	1	
75	519593 80	Elbow pipe	1	1	1	1	
76	223401 38	O-ring	2	2	2	2	
77	526540 80	Connecting piece	1	1	1	1	See page 44
78	526509 01	Gasket	1	1	1	1	
79	2216261 21	Stud bolt	2	2	2	2	
80	72946	Nut	2	2	2	2	
81	70492	Washer	2	2	2	2	
82	526538 80	Connecting piece	1	1	1	1	See page 46
83	2216261 03	Stud bolt	1	1	1	1	
84	72946	Nut	1	1	1	1	
85	70492	Washer	1	1	1	1	



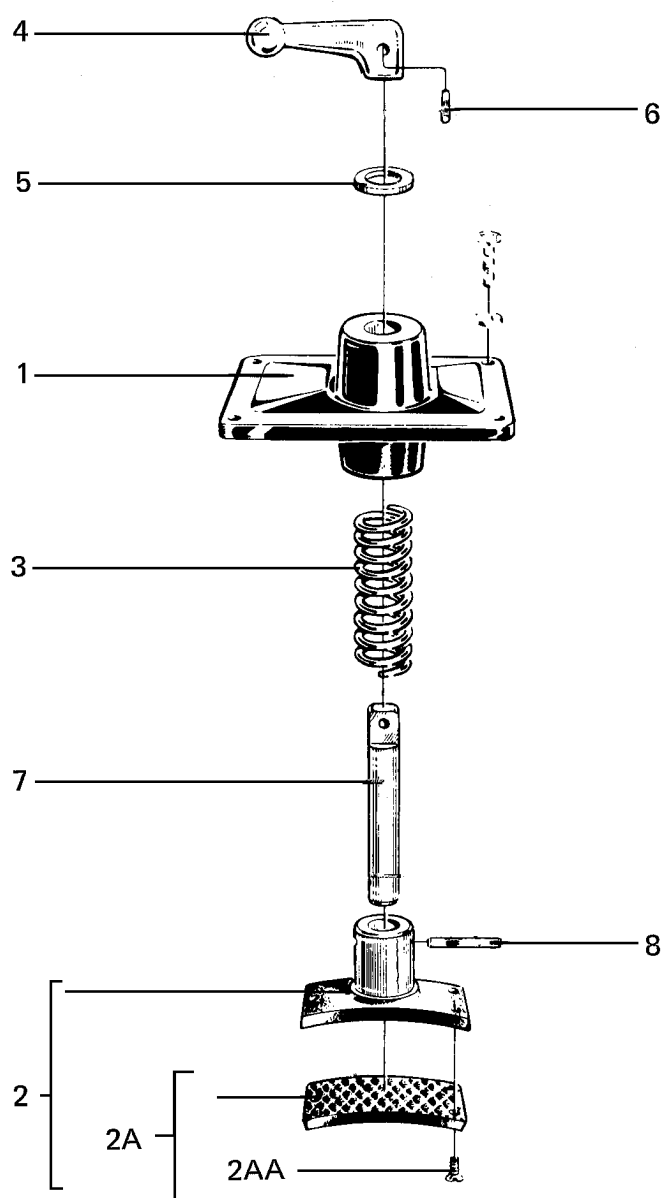
2.1 Revolution counter

			Machine unit number or Subassembly description 526712-					
Ref	Part No	Description	-81					Notes
				Quantity				
1	526694 02	Protecting collar	1					
2	526692 02	Bushing	1					
3	67542	Snap ring	1					
4	526693 01	Revolution counter shaft	1					
5	69226	Taper pin	1					
6	69214	Gear wheel	1					



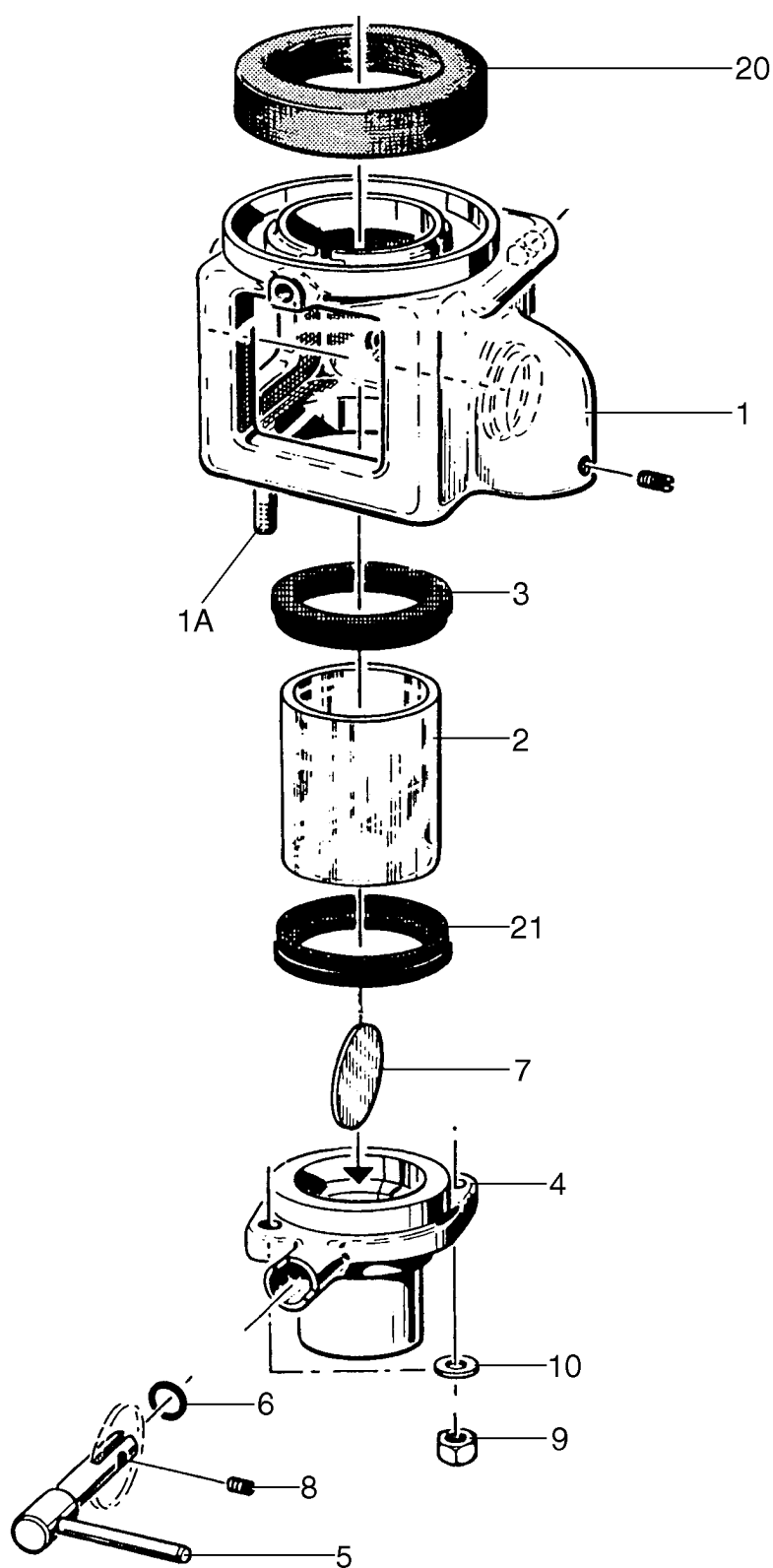
2.2 Guard

			Machine unit number or Subassembly description 518475-					
Ref	Part No	Description	-81	Quantity				Notes
1	526761 01	Guard	1					
2	518476 81	Brake shoe	1					
2A	518478 82	Friction pad	1					
2AA	8341	Screw	3					
3	39919	Spring	1					
4	522749 02	Handle	1					
5	8115	Washer	1					
6	68794	Slotted pin	1					
7	519563 01	Spindle	1					
8	222116 06	Grooved pin	1					



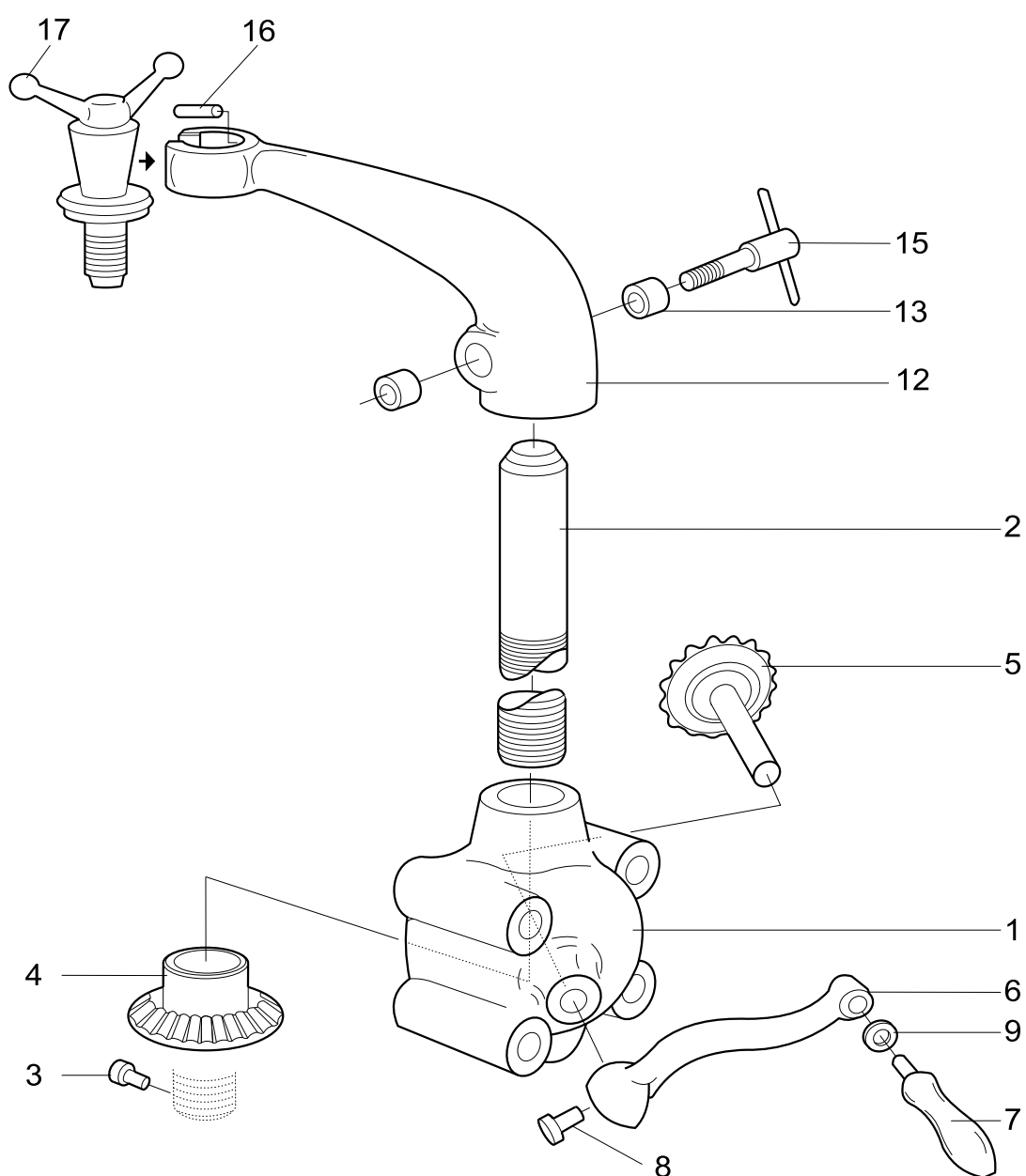
2.3 Inspection box

			Machine unit number or Subassembly description 526753-					
Ref	Part No	Description	-80	Quantity				Notes
1	526702 80	Inspection box	1					
1A	2216261 01	Stud bolt	2					
2	75099	Sight glass	1					
3	517671 01	Seal ring	1					
4	519582 02	Attachment piece	1					
5	520361 80	Throttle shaft	1					
6	65586	O-ring	1					
7	518392 01	Throttle	1					
8	27581	Screw	1					
9	72946	Nut	2					
10	70492	Washer	2					
20	519550 01	Seal ring	1					
21	517671 01	Seal ring	1					



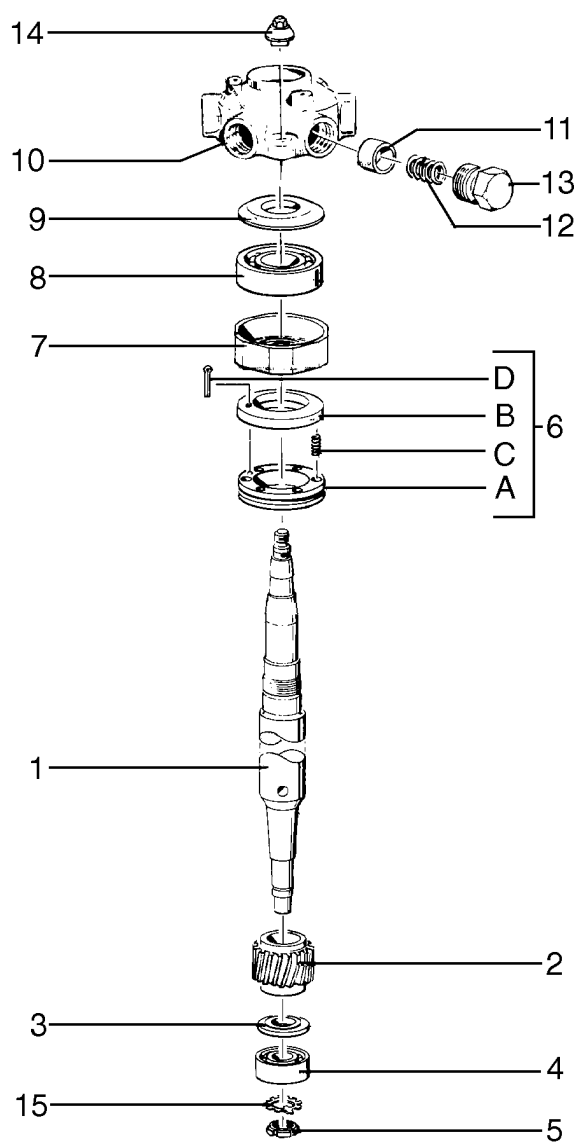
2.4 Lifting device

			Machine unit number or Subassembly description 520534-					
Ref	Part No	Description	-86	Quantity				Notes
1	33077	Gear housing	1					
2	520535 01	Spindle	1					
3	2211725 06	Screw	1					
4	33072	Gear wheel	1					
5	33071	Gear wheel	1					
6	520532 02	Crank lever	1					
7	65469	Crank handle	1					
8	2210947 13	Screw	1					
9	20758	Washer	1					
12	519200 02	Lifting arm	1					
13	33070	Gripping jaw (pair)	1					
15	33069	Clamp screw	1					
16	222116 12	Grooved pin	1					
17	520416 80	Lifting screw	1					



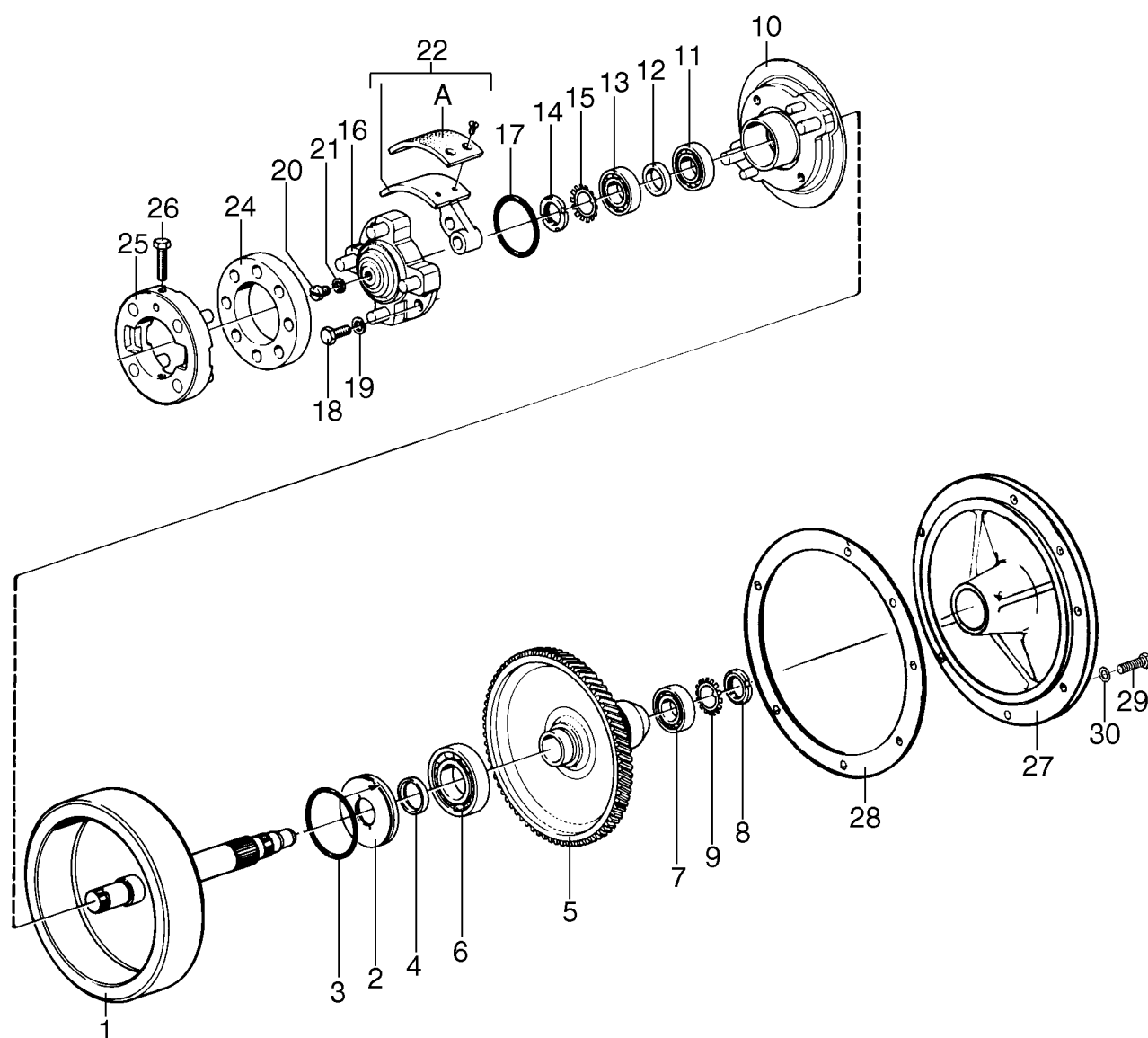
2.5 Bowl spindle

			Machine unit number or Subassembly description 526775-				
Ref	Part No	Description	-80 -81				Notes
			Quantity				
		50 Hz	↓				
		60 Hz		↓			
1	518463 01	Bowl spindle	1	1			
2	518441 05	Worm		1			
2	518441 09	Worm	1				
3	518459 01	Spacing washer	1	1			
4	548746 02	Ball bearing	1	1			
5	67472	Round nut	1	1			
6	518460 80	Axial buffer	1	1			
6A	518461 01	Spring support	1	1			
6B	518462 01	Wear ring	1	1			
6C	9699	Spring	6	6			
6D	16434	Split pin	2	2			
7	518435 02	Ball bearing housing	1	1			
8	9684	Ball bearing	1	1			
9	518436 02	Deflector	1	1			
10	518437 02	Spring casing	1	1			
11	518348 01	Buffer	6	6			
12	226214 13	Spring	6	6			
13	518349 01	Screw plug	6	6			
14	518415 01	Cap nut	1	1			
15	38159	Lock washer	1	1			



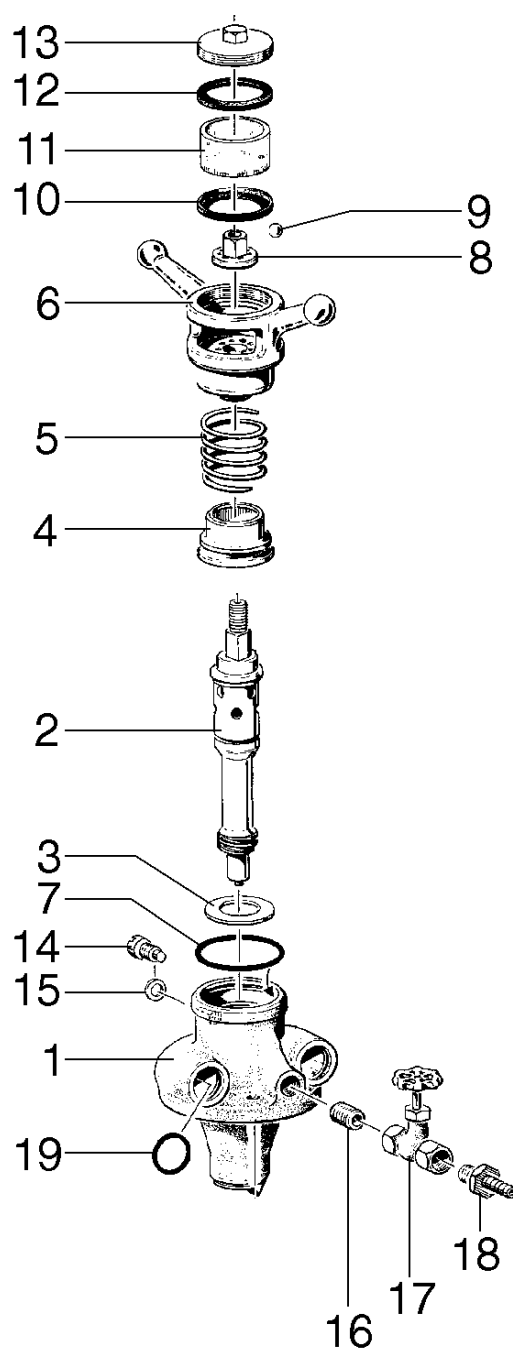
2.6 Driving device horizontal

			Machine unit number or Subassembly description 549885-				
Ref	Part No	Description	-80 -81				Notes
			Quantity				
		50 Hz	↓				
		60 Hz		↓			
1	526752 81	Worm wheel shaft	1	1			
2	526764 01	Sealing washer	1	1			
3	70940	O-ring	1	1			
4	223521 15	Seal ring	1	1			
5	526723 85	Worm wheel	1				
5	526723 87	Worm wheel		1			
6	8132	Ball bearing	1	1			
7	11455	Ball bearing	1	1			
8	67472	Round nut	1	1			
9	38159	Lock washer	1	1			
10	518443 80	Nave	1	1			
11	11455	Ball bearing	1	1			
12	518483 01	Spacing ring	1	1			
13	11455	Ball bearing	1	1			
14	67472	Round nut	1	1			
15	38159	Lock washer	1	1			
16	518444 80	Coupling disc	1	1			
17	64702	O-ring	1	1			
18	2210941 17	Screw	2	2			
19	40040	Spring washer	2	2			
20	2211725 06	Screw	1	1			
21	39518	Gasket	1	1			
22	527981 83	Friction block		2			
22	527981 85	Friction block	2				
22A	518478 83	Friction pad	1	1			
24	518484 01	Elastic plate	1	1			
25	518447 80	Coupling disc	1	1			
26	520244 02	Stop screw	2	2			
27	526754 02	Bearing shield	1	1			
28	518488 01	Gasket	1	1			
29	2210941 17	Screw	7	7			
30	20758	Washer	7	7			



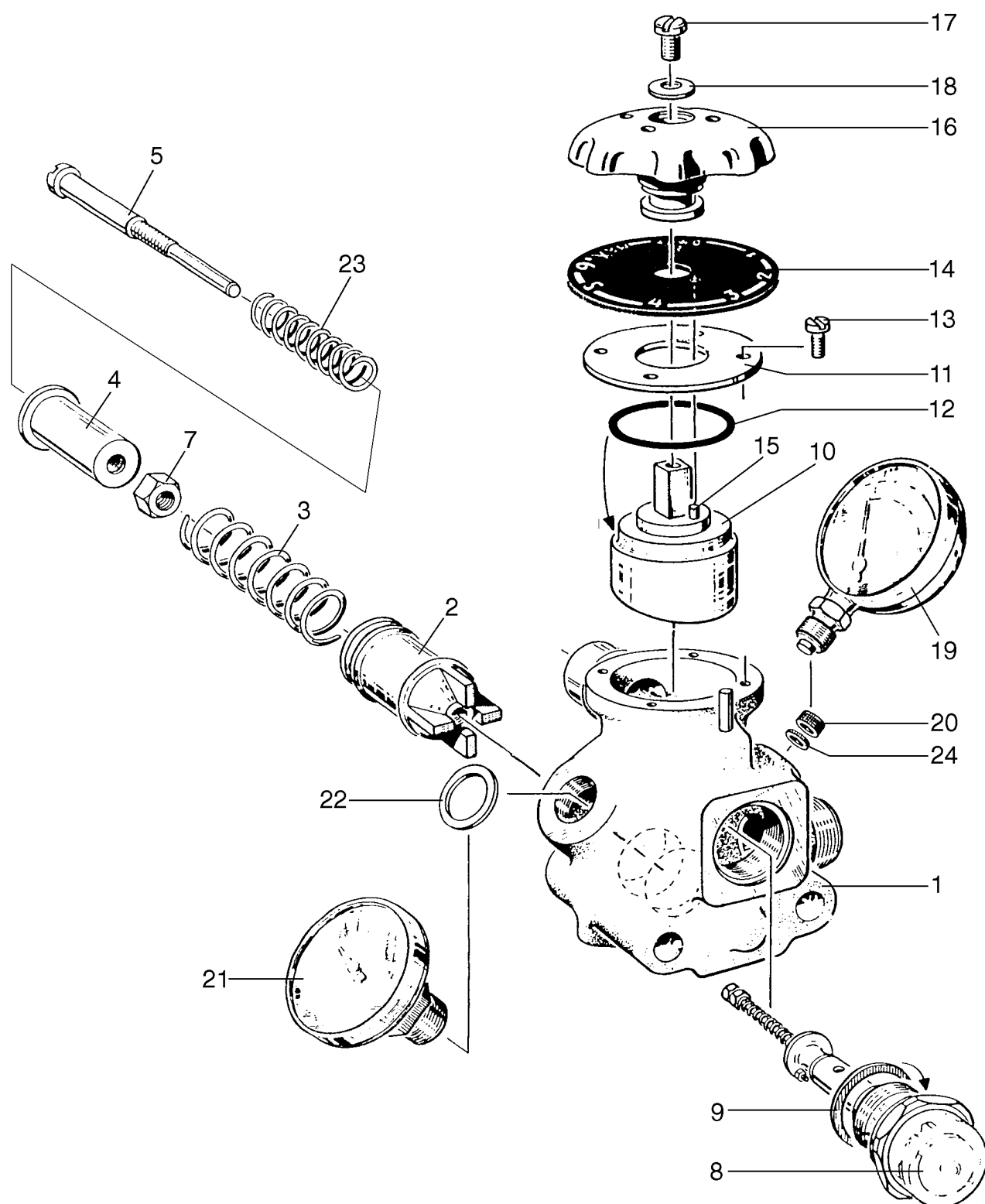
2.7 Connecting housing

			Machine unit number or Subassembly description 526543-					
Ref	Part No	Description	-80	Quantity				Notes
1	526465 80	Connecting housing	1					
2	519602 81	Inlet pipe	1					
3	223146 02	Washer	1					
4	526545 02	Stop sleeve	1					
5	226214 64	Spring	1					
6	7440262 02	Handle	1					
7	65201	O-ring	1					
8	526467 01	Nut	1					
9	233289 03	Ball	1					
10	73920	Seal ring	1					
11	73921	Glass tube	1					
12	73920	Seal ring	1					
13	519606 01	Cover	1					
14	38320	Screw	1					
15	518362 01	Gasket	1					
16	27517	Nipple	1					
17	526334 01	Needle valve	1					
18	252612 03	Hose nipple	1					
19	68085	O-ring	2					



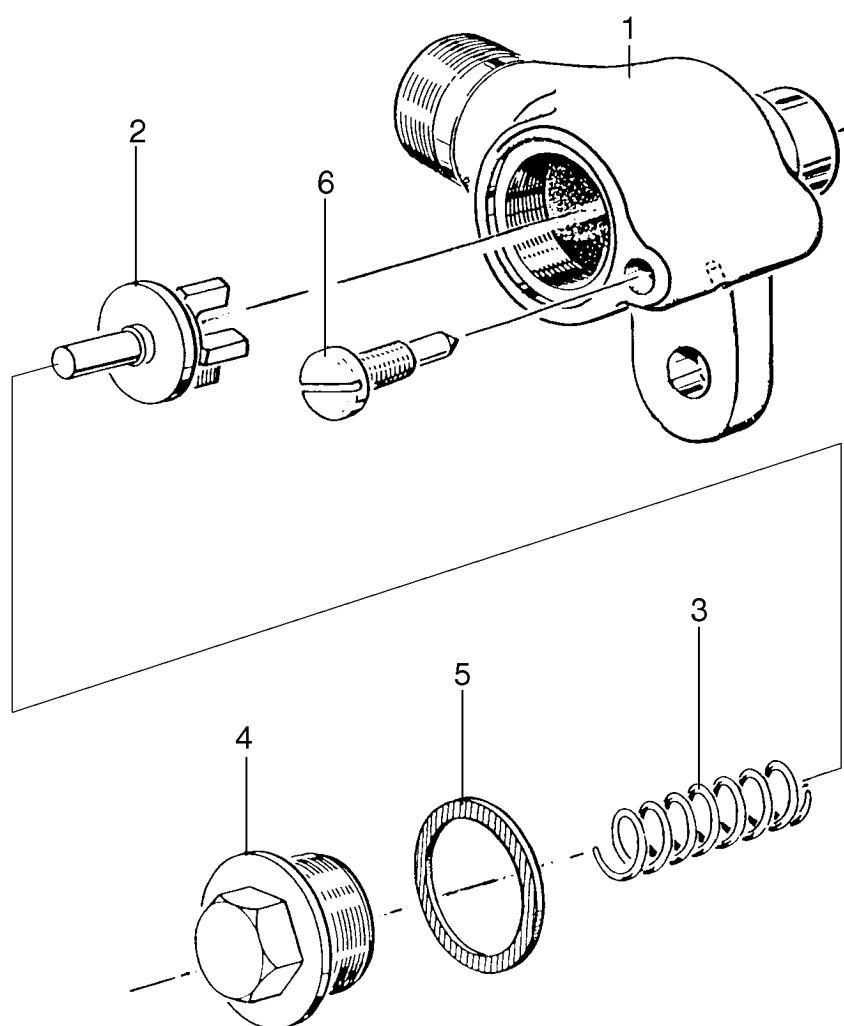
2.8 Connecting piece

			Machine unit number or Subassembly description 526540-				
Ref	Part No	Description	-80	Quantity			Notes
1	526500 80	Connecting piece	1				
2	526501 02	Valve cone	1				
3	226214 69	Spring	1				
4	527920 01	Spring support	1				
5	526504 01	Spindle	1				
7	2218043 02	Nut	1				
8	526542 80	Flow indicator	1				
9	33852	Gasket	1				
10	526536 02	Cock plug	1				
11	526482 01	Washer	1				
12	14238	O-ring	1				
13	17824	Screw	4				
14	526480 01	Flow rate scale	1				
15	222111 07	Cylindrical pin	1				
16	524392 83	Hand-wheel	1				
17	2211721 09	Screw	1				
18	223101 48	Washer	1				
19	543054 01	Pressure gauge	1				
20	223431 02	Rectangular ring	1				
21	64002	Thermometer	1				
22	9281	Gasket	3				
23	226214 70	Spring	1				
24	223101 17	Washer	1				



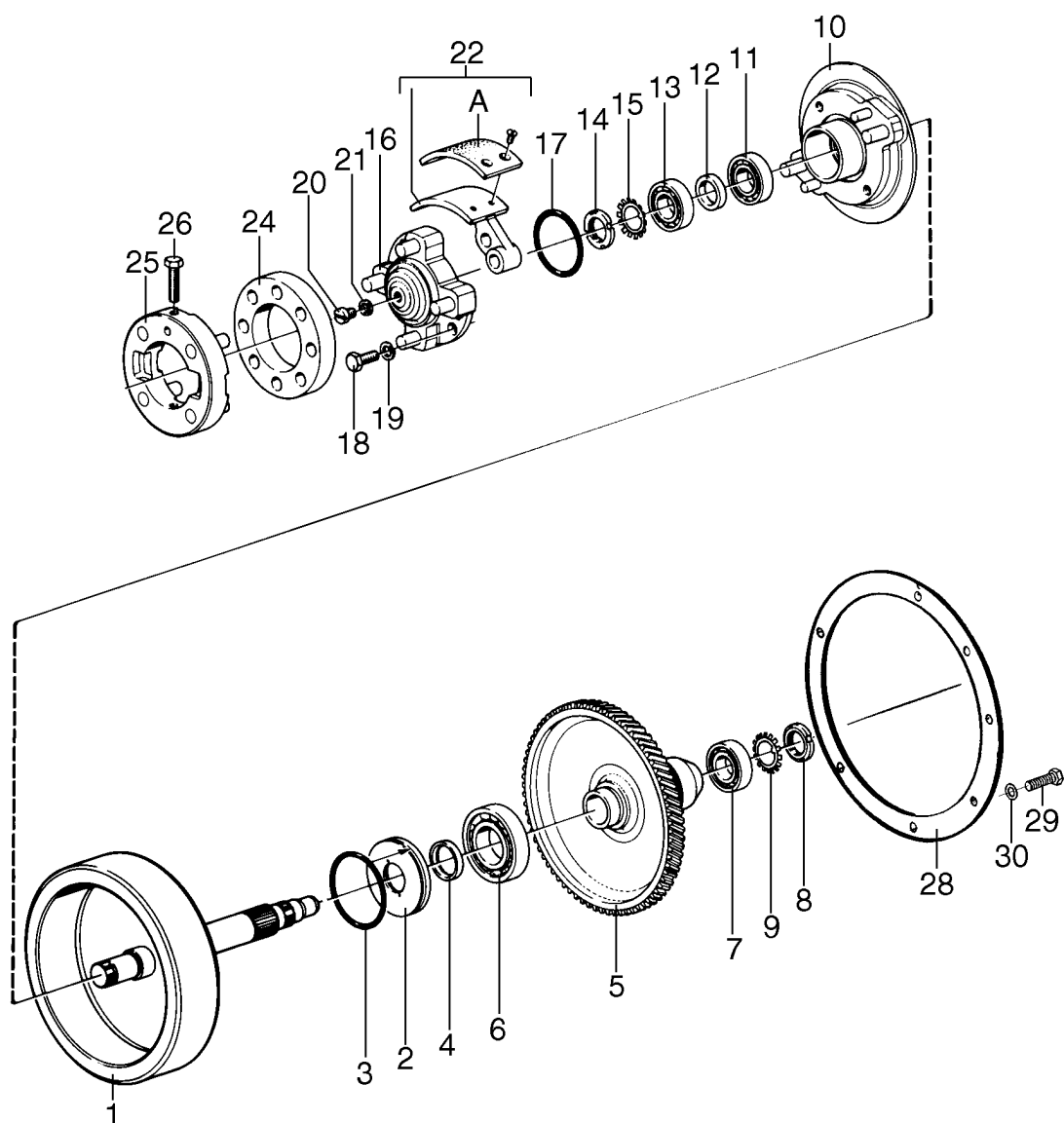
2.9 Connecting piece

			Machine unit number or Subassembly description 526538-						
Ref	Part No	Description	-80	Quantity					Notes
1	526498 02	Connecting piece	1						
2	525124 01	Valve cone	1						
3	226214 68	Spring	1						
4	525125 01	Cover	1						
5	518470 02	Gasket	1						
6	526499 01	Screw	1						



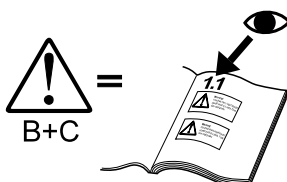
2.10 Driving device horizontal with built-in pump

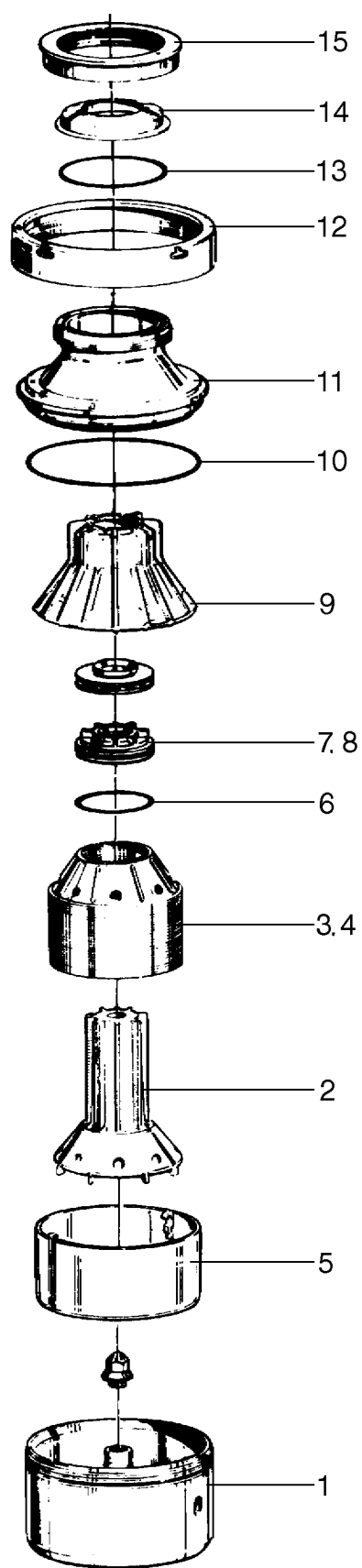
			Machine unit number or Subassembly description 549888-				
Ref	Part No	Description	-82 -83				Notes
			Quantity				
		50 Hz with built-in pump	↓				
		60 Hz with built-in pump		↓			
1	526752 81	Worm wheel shaft	1	1			
2	526764 01	Sealing washer	1	1			
3	70940	O-ring	1	1			
4	223521 15	Seal ring	1	1			
5	526723 85	Worm wheel	1				
5	526723 87	Worm wheel		1			
6	8132	Ball bearing	1	1			
7	11455	Ball bearing	1	1			
8	67472	Round nut	1	1			
9	38159	Lock washer	1	1			
10	518443 80	Nave	1	1			
11	11455	Ball bearing	1	1			
12	518483 01	Spacing ring	1	1			
13	11455	Ball bearing	1	1			
14	67472	Round nut	1	1			
15	38159	Lock washer	1	1			
16	518444 80	Coupling disc	1	1			
17	64702	O-ring	1	1			
18	2210941 17	Screw	2	2			
19	40040	Spring washer	2	2			
20	2211725 06	Screw	1	1			
21	39518	Gasket	1	1			
22	526769 84	Friction block	2				
22	527981 85	Friction block		2			
22A	518478 83	Friction pad	1	1			
24	518484 01	Elastic plate	1	1			
25	518447 80	Coupling disc	1	1			
26	520244 02	Stop screw	2	2			
28	518488 01	Gasket	1	1			
29	72933	Screw	7	7			
30	20758	Washer	7	7			



3 Separator bowl, caulks 0,5 mm

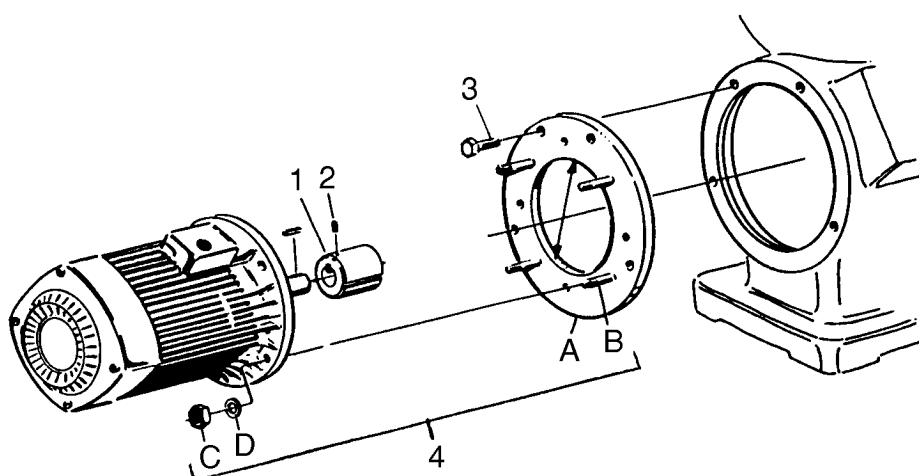
			Machine unit number or Subassembly description 546132-				
Ref	Part No	Description	-02	Quantity			Notes
1	546104 01	Bowl body	1				B
2	7440252 80	Distributor	1				B
3	518416 85	Bowl disc Ø 0,5 mm	102				
4	518416 85	Bowl disc Ø 0,5 mm	2				Delivered loose
5	524381 82	Sludge basket	1				
6	223401 28	O-ring	1				Delivered loose
7	7440219 02	Level ring Ø 70 mm	1				
8	7440219 03	Level ring Ø 80 mm	1				Delivered loose
9	7440267 02	Top disc, machined	1				Alternative
10	11905	O-ring	1				B
11	546106 80	Bowl hood	1				Delivered loose
12	518306 01	Lock ring	1				B
13	69270	O-ring	1				B
14	515423 09	Gravity disc Ø 74 mm	1				Delivered loose
14	515423 10	Gravity disc Ø 77 mm	1				Delivered loose
14	515423 11	Gravity disc Ø 81 mm	1				Alternative
14	515423 12	Gravity disc Ø 55 mm	1				Delivered loose
14	74094	Gravity disc Ø 86 mm	1				Alternative
14	74095	Gravity disc Ø 90,0 mm	1				Delivered loose
14	74099	Gravity disc Ø 119 mm	1				Alternative
14	75085	Gravity disc Ø 98,0 mm	1				Delivered loose
14	75091	Gravity disc Ø 108,5 mm	1				Alternative
15	7440220 02	Lock ring	1				Delivered loose
							Alternative





4 Parts for motor mounting, Ø 230/250 mm

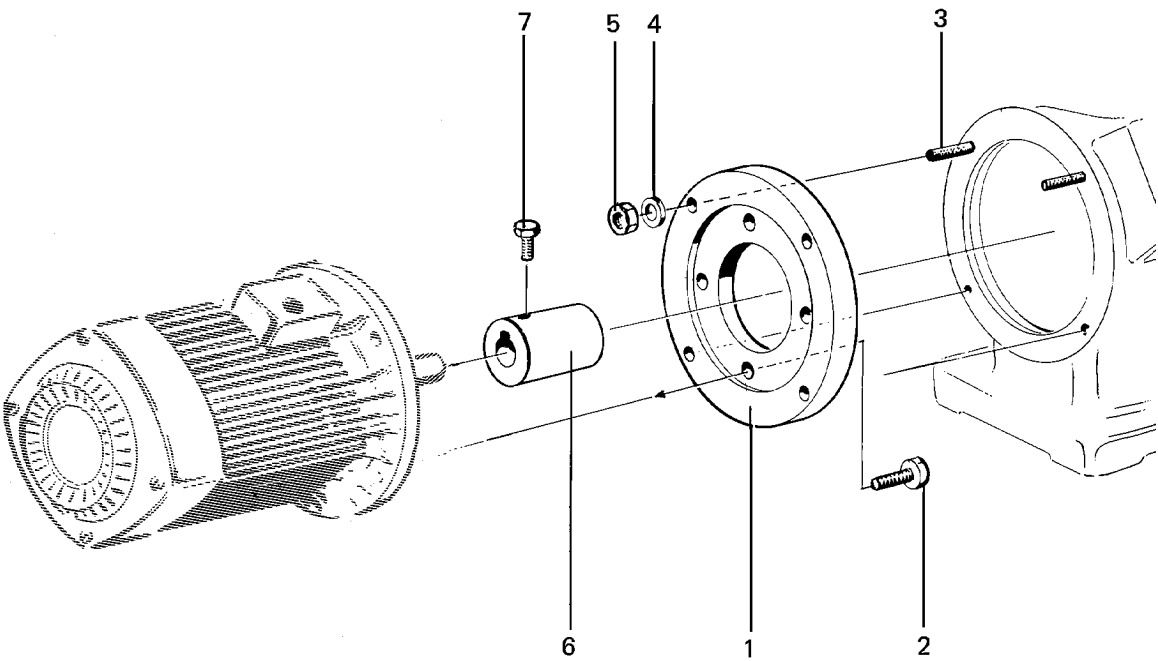
			Machine unit number or Subassembly description 549886-				
Ref	Part No	Description	-03 -05				Notes
			Quantity				
		Motor adapter with guide Ø 230 mm intended for 5,5 KW motor	↓				
		Motor adapter with guide Ø 250 mm intended for 12 kW motor		↓			
1	523352 07	Coupling nave	1				
1	523352 09	Coupling pulley		1			
2	221585 05	Screw	1	1			
3	72926	Screw	4	4			
4	520432 80	Motor adapter	1				
4	526815 80	Motor adapter		1			
4A	520432 02	Motor adapter	1				
4A	526815 02	Motor adapter		1			
4B	2216261 01	Stud bolt	4				Delivered loose
4B	70489	Stud bolt		4			Delivered loose
4C	2218043 04	Nut		4			Delivered loose
4C	72946	Nut	4				Delivered loose
4D	70490	Washer		4			Delivered loose
4D	70492	Washer	4				Delivered loose



5 Parts for motor mounting, NEMA standard

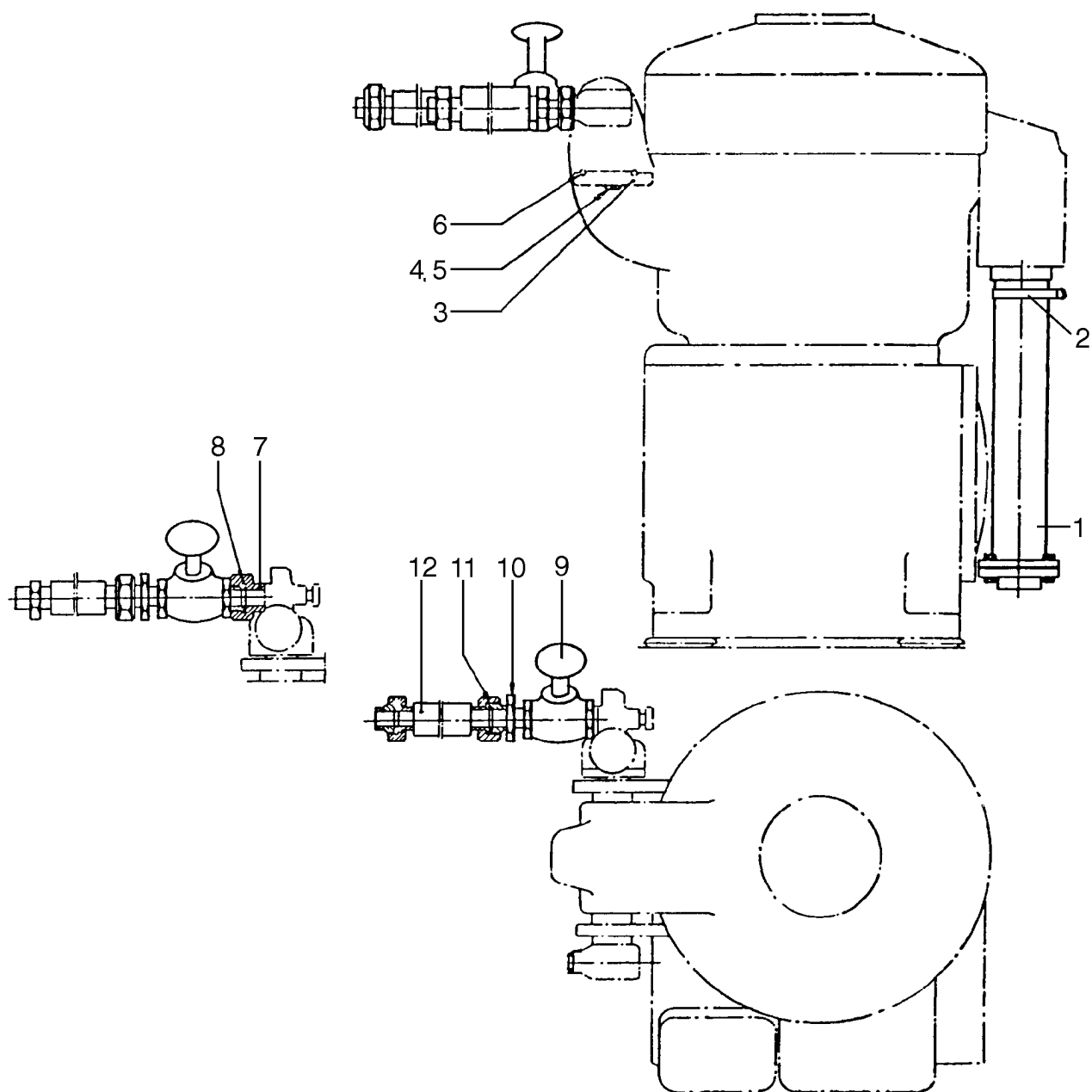
(Type 215 TC "C-flange")

			Machine unit number or Subassembly description 541428-					
Ref	Part No	Description	-80	Quantity				Notes
1	541407 02	Motor adapter	1					
2	2210947 16	Screw	4					
3	2216261 02	Stud bolt	4					
4	223101 50	Washer	4					
5	72946	Nut	4					
6	523352 05	Coupling nave	1					
7	221585 05	Screw	1					



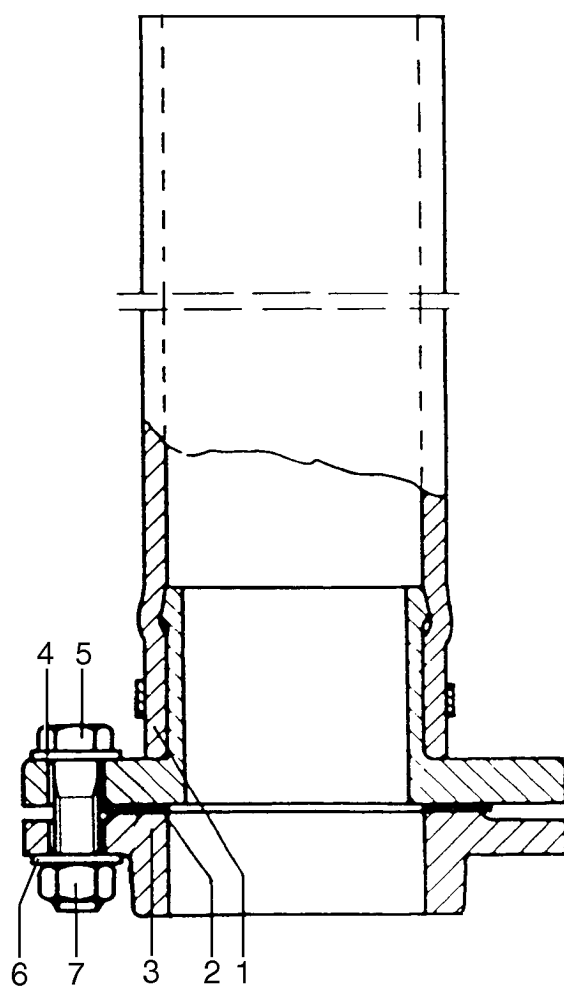
6 Set of fittings for machine without pump

Ref	Part No	Description	Machine unit number or Subassembly description 529795- -81				Notes
			Quantity				
1	521535 81	Connecting hose	1				See page 58
2	69263	Hose clip	1				
3	529733 02	Blind flange	1				
4	2210947 16	Screw	2				
5	70492	Washer	2				
6	223410 08	O-ring	1				
7	529504 02	Hexagon nipple	1				
8	546229 12	Rectangular ring	1				
9	531749 01	Control valve	1				
10	529503 02	Hexagon nipple	1				
11	546229 12	Rectangular ring	2				
12	534114 81	Connecting hose	2				



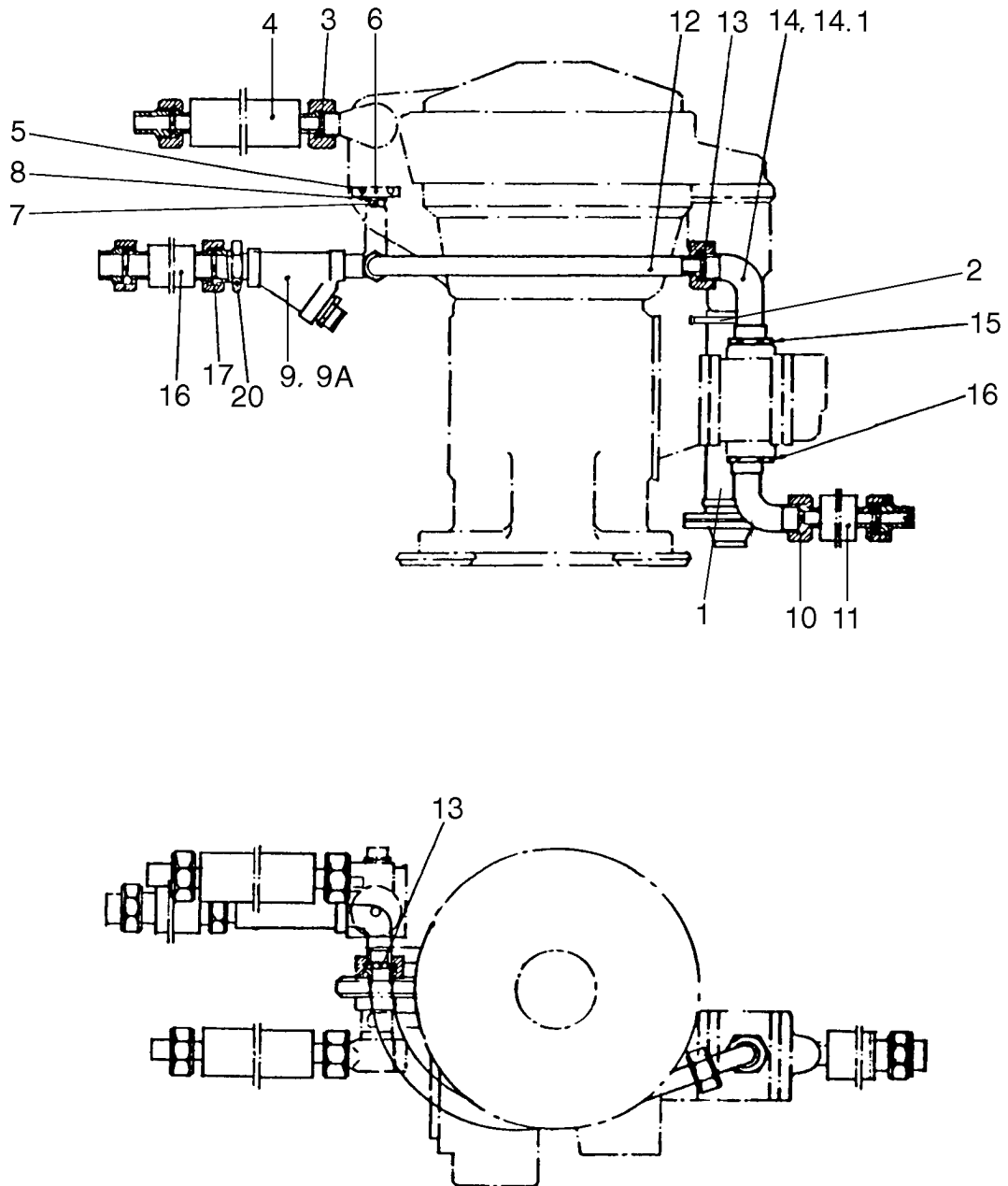
6.1 Connecting hose

			Machine unit number or Subassembly description 521535-					
Ref	Part No	Description	-81	Quantity				Notes
1	521536 81	Connecting hose	1					
2	546229 20	Rectangular ring	1					
3	2532201 17	Welding neck flange	1					
4	70492	Washer	4					
5	2210947 01	Screw	4					
6	70492	Washer	4					
7	72946	Nut	4					



7 Set of fittings for machine with pump

			Machine unit number or Subassembly description 526577-				
Ref	Part No	Description	-82	Quantity			Notes
1	521535 81	Connecting hose	1				See page 58
2	69263	Hose clip	1				
3	546229 12	Rectangular ring	2				
4	534114 81	Connecting hose	2				
5	223410 08	O-ring	1				
6	526705 02	Connecting elbow	1				
7	2210947 16	Screw	2				
8	70492	Washer	2				
9	515482 09	Strainer	1				
9A	515482 33	Strainer drum					
10	546229 12	Rectangular ring	1				
11	534114 81	Connecting hose	1				
12	526587 80	Tube	1				
13	546229 02	Rectangular ring	2				
14	526468 02	Elbow pipe	1				
14.1	526706 02	Elbow pipe	1				
15	65313	Backnut	2				
16	534115 81	Connecting hose	1				
17	546229 02	Rectangular ring	1				
20	69016	Nipple	1				



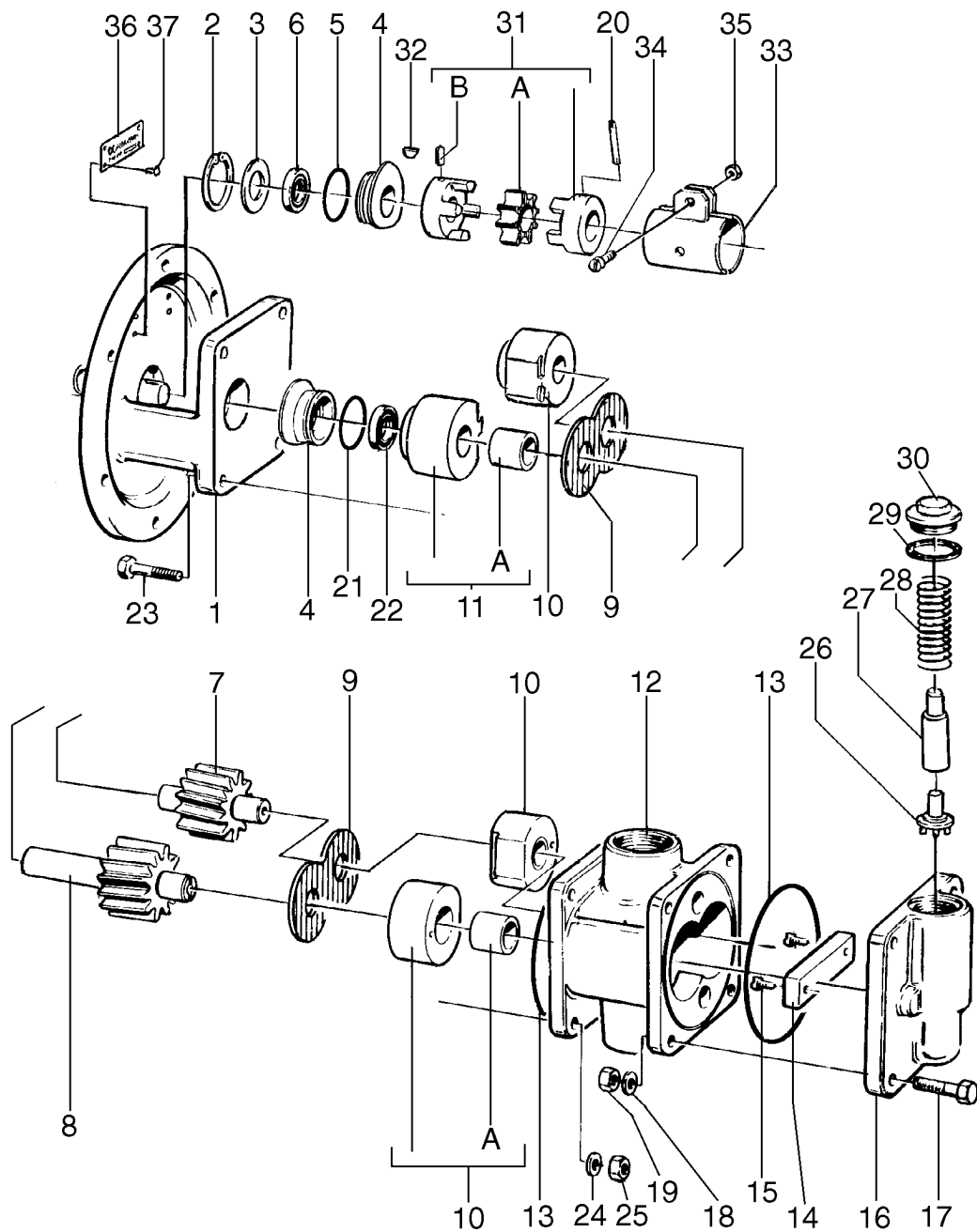
8 Set of plates

			Machine unit number or Subassembly description 549572-					
Ref	Part No	Description	-54	Quantity				Notes
1	557714 01	Machine plate	1					
2	66169	Drive screw	4					
3	1270019*	Set of safety labels	1					
4	523702 01	Name sign	1					
5	66169	Drive screw	4					
6	553171 01	Label 50 Hz	1					
6	553272 01	Label 60 Hz	1					
7	52406	Plate with arrow	1					
8	66169	Drive screw	2					
9	1270001	Lifting instruction	1					
10	554214 02	Cable tie	1					

[illegible]

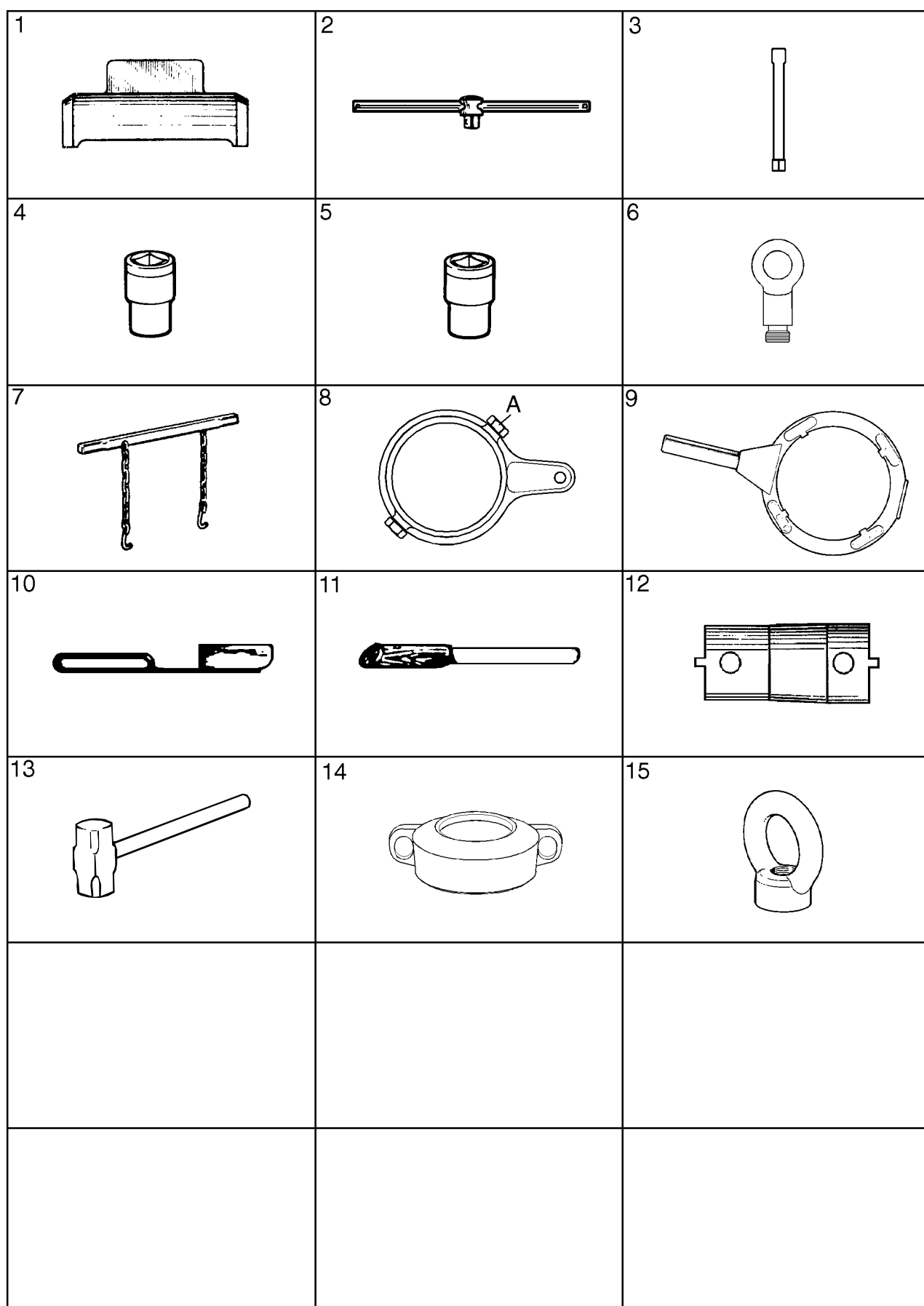
9 Feed pump

			Machine unit number or Subassembly description 538718-				
Ref	Part No	Description	-81 -83				Notes
		8540 l/h 50 Hz - 10250 l/h 60 Hz 4350 l/h 50 Hz - 5220 l/h 60 Hz	Quantity				
			↓	↓			
1	525162 02	Bearing shield	1	1			
2	223642 22	Retaining ring	1	1			
3	526127 01	Washer	1	1			
4	545019 01	Sleeve	2	2			
5	223406 30	O-ring	1	1			
6	223521 14	Seal ring	1	1			
7	526136 03	Impeller 96 mm		1			
7	526136 05	Impeller 123 mm	1				
8	538539 03	Impeller 137 mm		1			
8	538539 05	Impeller 164 mm	1				
9	535743 04	Wear gasket	2	2			
10	535741 80	Bearing	3	3			
10A	523644 03	Bushing	1	1			
11	535742 80	Bearing	1	1			
11A	523644 03	Bushing	1	1			
12	526129 02	Pump housing		1			
12	526138 02	Pump housing	1				
13	223406 40	O-ring	2	2			
14	526141 01	Spacing piece		1			
14	526141 05	Spacing piece	1				
15	2211721 08	Screw	2	2			
16	526139 02	Shield	1	1			
17	2210941 01	Screw	4	4			
18	20758	Washer	4	4			
19	73200	Nut	4	4			
20	222119 30	Tubular spring pin	1	1			
21	223406 30	O-ring	1	1			
22	223521 12	Seal ring	1	1			
23	2210941 01	Screw	4	4			
24	20758	Washer	4	4			
25	73200	Nut	4	4			
26	525124 01	Valve cone	1	1			
27	526026 01	Guide pole	1	1			
28	226214 65	Spring	1	1			
29	518470 02	Gasket	1	1			
30	525125 01	Cover	1	1			
31	538574 80	Flexible coupling	1	1			
31A	538574 02	Tooth rim	1	1			
31B	221581 04	Hexagon socket set screw	1	1			
32	541405 01	Key	1	1			
33	538535 01	Sleeve half	2	2			
34	221131 03	Screw	1	1			
35	221803 28	Nut	1	1			
36	528629 01	Plate	1	1			
37	66169	Drive screw	4	4			



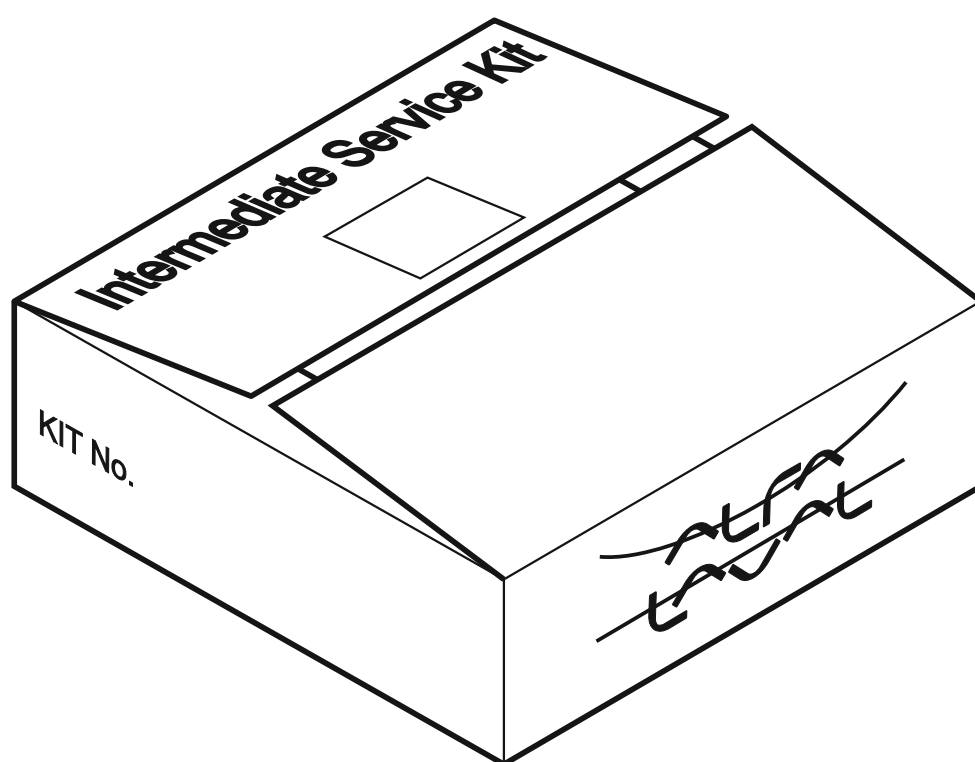
10 Set of tools

			Machine unit number or Subassembly description 555535-					
Ref	Part No	Description	-90	Quantity				Notes
1	519293 02	Driving-off tool	1					Ball bearing
2	72243	T-handle	1					
3	72244	Extension rod 240-255 mm	1					
4	73376	Socket 9/16" (1/2")	1					
5	73377	Socket 3/4" (1/2")	1					
6	557629 80	Lifting tool	1					Bowl body
7	522900 80	Lifting tool	1					Sludge basket
8	556045 80	Spanner for lock ring	1					Lock ring small
8A	555604 04	Hexagon screw	2					
9	519352 80	Spanner	1					Lock ring large
10	33152	Sediment scoop	1					Sludge in bowl
11	32818	Sediment knife	1					Sludge in bowl
12	72719	Pin spanner	1					Lock nut horizontal device
13	589035 01	Brass hammer	1					
14	556051 80	Lifting tool	1					Bowl hood
15	414726 83	Lifting eye	1					Bowl spindle



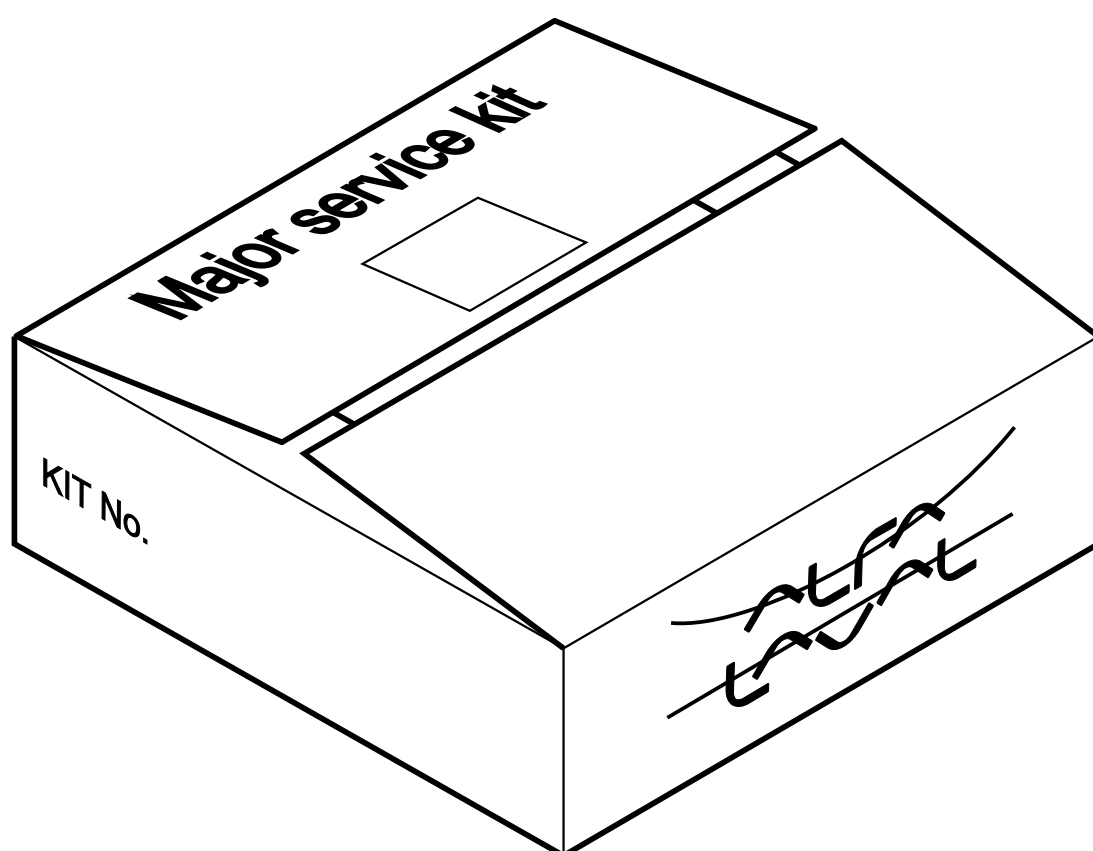
11 Intermediate service kit

			Machine unit number or Subassembly description 558842-					
Ref	Part No	Description	-01	Quantity				Notes
1	11905	O-ring	1					Bowl hood/ Bowl body
2	39099	O-ring	1					Collecting cover
3	39099	O-ring	1					Frame top part
4	65201	O-ring	1					Connecting housing/ Handle
5	68085	O-ring	2					Connecting housing/ Pipes
6	69270	O-ring	1					Bowl hood/ Gravity disc
7	223401 28	O-ring	1					Level ring
8	223401 30	O-ring	1					Connecting housing/ Paring disc
9	518362 01	Gasket	1					Connecting housing/ Screw
10	518470 01	Gasket	1					Oil drain plug
11	519550 01	Seal ring	1					Inspection box
12	518478 82	Friction pad	1					Brake
12A	8341	Screw	3					Connecting housing
13	38320	Screw	1					
14	569415 03	Food Grade H1 Silicone Grease	1					
15	537086 07	Molykote P-1900	1					



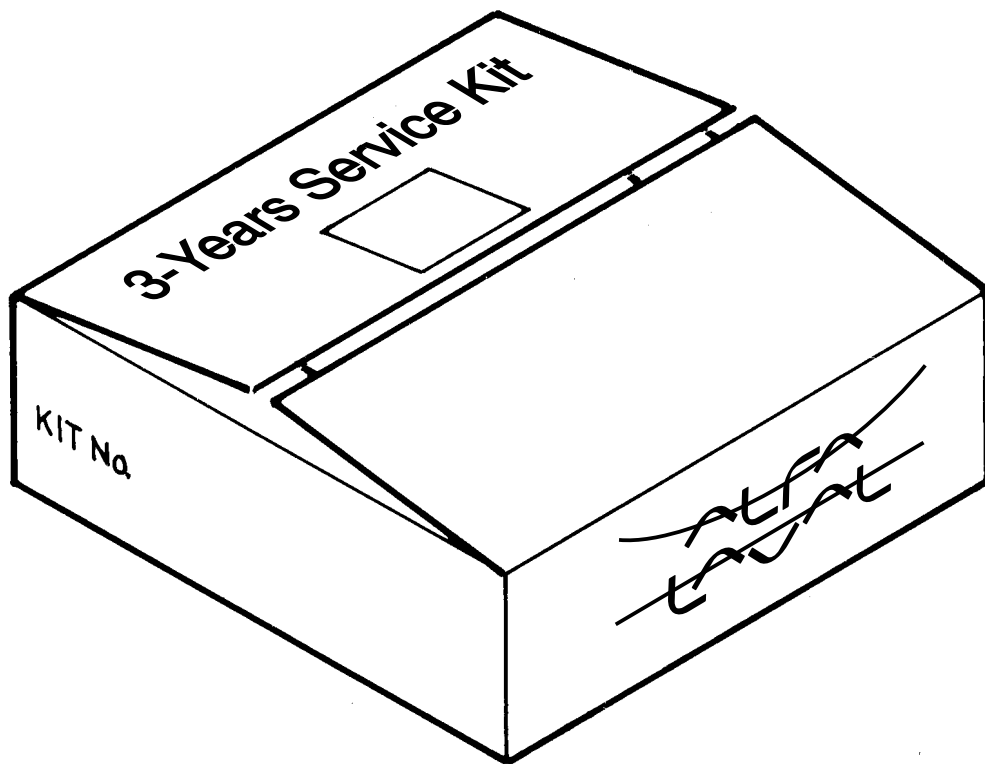
12 Major service kit

			Machine unit number or Subassembly description 558843-				
Ref	Part No	Description	-01	Quantity			Notes
1	64702	O-ring	1				Nave/ Coupling disc
2	64706	O-ring	1				Protecting collar/ Bowl spindle
3	70940	O-ring	1				Sealing washer/ Frame
4	223412 02	O-ring	1				Frame/ Spring casing
5	223412 04	O-ring	1				Frame/ Protecting guard
6	73920	Seal ring	2				Connecting housing/ Sight glass
7	517671 01	Seal ring	2				Inspection box/ Sight glass
8	223521 15	Seal ring	1				Worm wheel shaft/ Sealing washer
9	1104	Rectangular ring	1				Oil gauge glass/ Frame
10	39518	Gasket	1				Coupling disc/ Screw
11	518488 01	Gasket	1				Frame/ Bearing shield
12	9684	Ball bearing	1				Top bearing
13	8132	Ball bearing	1				Worm wheel/ Frame
14	11455	Ball bearing	3				Worm wheel shaft
15	548746 02	Ball bearing	1				Bottom bearing
16	40040	Spring washer	2				Screw/ Coupling disc
17	62094	Spring washer	3				Screw/ Spring casing
18	38159	Lock washer	3				Worm wheel shaft/ Bowl spindle
19	2211725 06	Screw	1				Coupling disc
20	2211721 07	Screw	6				Spring casing/ Protecting collar
21	2211721 08	Screw	3				Fixing plate/ Oil gauge glass
22	518478 83	Friction pad	2				Friction coupling



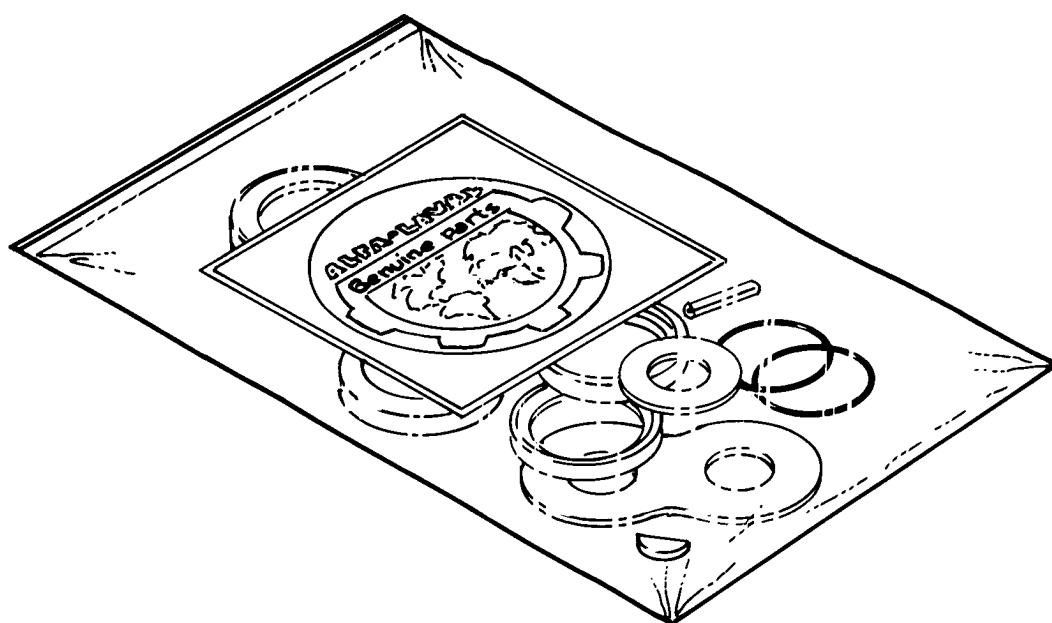
13 3-years service kit

			Machine unit number or Subassembly description 558844-					
Ref	Part No	Description	-01	Quantity				Notes
1	66554	O-ring	1				Bottom bushing	
2	65586	O-ring	1				Inspection box/ Shutter shaft	
3	65232	Rectangular ring	4				Foundation feet	
4	65235	Rectangular ring	4				Foundation feet	
5	518484 01	Elastic plate	1				Friction coupling	
6	38723	Lock washer	1				Bottom bushing/ Frame	
7	8859	Oil gauge glass	1					
8	75099	Sight glass	1				Inspection box	
9	73921	Glass tube	1				Connecting housing	
10	27581	Screw	1				Inspection box/ Shutter	
11	9699	Spring	6				Axial buffer	
12	226214 13	Spring	6				Spring casing	
13	226214 64	Spring	1				Connecting housing	
14	16434	Split pin	2				Axial buffer	
15	518348 01	Buffer	6				Spring casing	



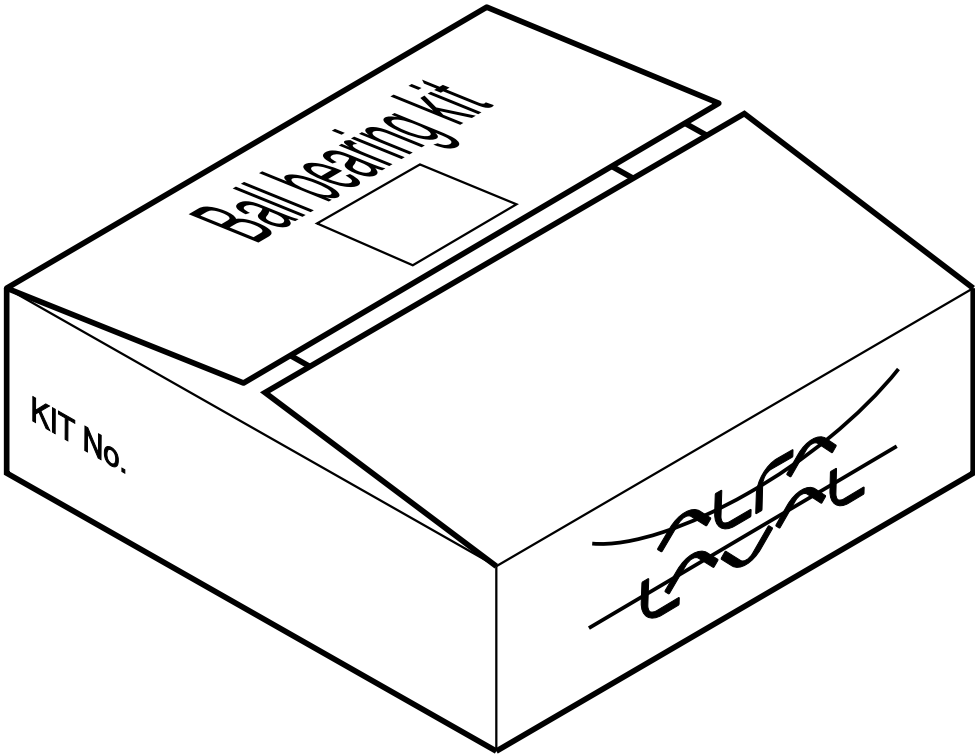
14 Service kit for pump

			Machine unit number or Subassembly description 547965-					
Ref	Part No	Description	-03					Notes
				Quantity				
1	535743 04	Wear gasket	2					Bearing/ Impeller
2	538574 02	Tooth rim	1					Flexible coupling
3	222119 30	Tubular spring pin	1					Flexible coupling
4	223406 40	O-ring	2					Pump housing/ Shield
5	223406 30	O-ring	2					Pump adapter/ Sleeve
6	223521 12	Seal ring	1					Sleeve/ Impeller
7	223521 14	Seal ring	1					Sleeve/ Worm wheel shaft
8	518470 02	Gasket	1					Shield/ Cover
9	541405 01	Key	1					Worm wheel shaft/ Flexible coupling



15 Ball bearing kit

Ref	Part No	Description	Machine unit number or Subassembly description 9032753-				Notes
			-02	Quantity			
1	548051 47	Ball bearing	1				D-end
2	548051 23	Ball bearing	1				N-end



16 Cross reference list

Part No.	Page	Ref.	Part No.	Page	Ref.	Part No.	Page	Ref.
1104	26	14	2211725 06	48	20	225415 41	26	26
1104	70	9	2211725 06	70	19	226214 13	38	12
11455	40	7	221581 04	64	31B	226214 13	72	12
11455	40	11	221585 05	52	2	226214 64	42	5
11455	40	13	221585 05	54	7	226214 64	72	13
11455	48	7	2216261 01	34	1A	226214 65	64	28
11455	48	11	2216261 01	52	4B	226214 68	46	3
11455	48	13	2216261 02	54	3	226214 69	44	3
11455	70	14	2216261 03	27	83	226214 70	44	23
11905	50	10	2216261 21	27	79	233289 03	42	9
11905	68	1	221803 28	64	35	252612 03	42	18
1270001	62	9	2218043 02	44	7	2532201 17	58	3
1270019*	62	3	2218043 04	52	4C	26472	26	32
14238	44	12	221854 03	27	72	27517	42	16
16434	38	6D	222111 07	44	15	27581	34	8
16434	72	14	222116 05	26	25	27581	72	10
17824	44	13	222116 06	32	8	32818	66	11
20758	36	9	222116 12	36	16	33069	36	15
20758	40	30	222119 30	64	20	33070	36	13
20758	26	22	222119 30	74	3	33071	36	5
20758	48	30	223101 17	44	24	33072	36	4
20758	26	37	223101 48	44	18	33077	36	1
20758	64	18	223101 50	54	4	33152	66	10
20758	64	24	223146 02	42	3	33852	44	9
20758	27	73	223401 28	50	6	37547	27	63
2210941 01	64	17	223401 28	68	7	38159	38	15
2210941 01	64	23	223401 30	68	8	38159	40	9
2210941 17	40	18	223401 30	27	70	38159	40	15
2210941 17	40	29	223401 38	27	76	38159	48	9
2210941 17	48	18	223406 30	64	5	38159	48	15
2210941 17	26	36	223406 30	64	21	38159	70	18
2210941 18	27	66	223406 30	74	5	38320	42	14
2210947 01	58	5	223406 40	64	13	38320	68	13
2210947 04	27	45	223406 40	74	4	38723	26	11
2210947 09	26	42.1	223410 08	56	6	38723	72	6
2210947 13	36	8	223410 08	60	5	39099	68	2
2210947 16	54	2	223412 02	70	4	39099	68	3
2210947 16	56	4	223412 02	26	44	39099	27	56
2210947 16	60	7	223412 04	70	5	39099	27	67
2210947 16	26	40	223412 04	27	48	39518	40	21
221131 03	64	34	223431 02	44	20	39518	48	21
2211721 07	70	20	223521 12	64	22	39518	70	10
2211721 07	27	49	223521 12	74	6	39919	32	3
2211721 07	27	53	223521 14	64	6	40040	40	19
2211721 08	26	17	223521 14	74	7	40040	48	19
2211721 08	64	15	223521 15	40	4	40040	70	16
2211721 08	70	21	223521 15	48	4	414726 83	66	15
2211721 09	44	17	223521 15	70	8	515423 09	50	14
2211725 06	36	3	223642 22	64	2	515423 10	50	14
2211725 06	40	20	225415 31	27	57	515423 11	50	14

Part No.	Page	Ref.	Part No.	Page	Ref.	Part No.	Page	Ref.
515423 12	50	14	518478 83	48	22A	52406	62	7
515482 09	60	9	518478 83	70	22	524381 82	50	5
515482 33	60	9A	518479 01	26	35	524392 83	44	16
517671 01	34	3	518483 01	40	12	525124 01	46	2
517671 01	34	21	518483 01	48	12	525124 01	64	26
517671 01	70	7	518484 01	40	24	525125 01	46	4
518306 01	50	12	518484 01	48	24	525125 01	64	30
518348 01	38	11	518484 01	72	5	525162 02	64	1
518348 01	72	15	518488 01	40	28	526026 01	64	27
518349 01	38	13	518488 01	48	28	526127 01	64	3
518362 01	42	15	518488 01	70	11	526129 02	64	12
518362 01	68	9	519200 02	36	12	526136 03	64	7
518376 01	27	61	519293 02	66	1	526136 05	64	7
518392 01	34	7	519352 80	66	9	526138 02	64	12
518408 01	26	24	519517 02	26	31	526139 02	64	16
518409 01	26	23	519550 01	34	20	526141 01	64	14
518412 02	26	34	519550 01	68	11	526141 05	64	14
518415 01	38	14	519563 01	32	7	526334 01	42	17
518416 85	50	3	519577 02	27	62	526465 80	42	1
518416 85	50	4	519582 02	34	4	526467 01	42	8
518431 02	26	8	519592 80	27	74	526468 02	60	14
518435 02	38	7	519593 80	27	75	526480 01	44	14
518436 02	38	9	519602 81	42	2	526482 01	44	11
518437 02	38	10	519606 01	42	13	526498 02	46	1
518438 02	27	50	519607 01	27	71	526499 01	46	6
518441 05	38	2	519626 02	27	55	526500 80	44	1
518441 09	38	2	519627 02	27	65	526501 02	44	2
518443 80	40	10	519682 81	26	1	526504 01	44	5
518443 80	48	10	520244 02	40	26	526509 01	27	78
518444 80	40	16	520244 02	48	26	526536 02	44	10
518444 80	48	16	520361 80	34	5	526538 80	27	82
518447 80	40	25	520416 80	36	17	526540 80	27	77
518447 80	48	25	520432 02	52	4A	526542 80	44	8
518457 01	27	47	520432 80	52	4	526543 80	27	69
518458 01	27	51	520529 02	26	12	526545 02	42	4
518459 01	38	3	520532 02	36	6	526587 80	60	12
518460 80	38	6	520534 86	26	42	526686 02	26	18
518461 01	38	6A	520535 01	36	2	526692 02	30	2
518462 01	38	6B	521535 81	56	1	526693 01	30	4
518463 01	38	1	521535 81	60	1	526694 02	30	1
518470 01	26	13	521536 81	58	1	526702 80	34	1
518470 01	68	10	522749 02	32	4	526705 02	60	6
518470 02	46	5	522883 82	27	68	526706 02	60	14.1
518470 02	64	29	522900 80	66	7	526712 81	26	19
518470 02	74	8	523352 05	54	6	526723 85	40	5
518475 81	26	20	523352 07	52	1	526723 85	48	5
518476 81	32	2	523352 09	52	1	526723 87	40	5
518478 82	32	2A	523644 03	64	10A	526723 87	48	5
518478 82	68	12	523644 03	64	11A	526752 81	40	1
518478 83	40	22A	523702 01	62	4	526752 81	48	1

Part No.	Page	Ref.	Part No.	Page	Ref.	Part No.	Page	Ref.
526753 80	26	38	548051 47	76	1	67542	30	3
526754 02	40	27	548695 02	26	29	68085	42	19
526761 01	32	1	548695 02	27	60	68085	68	5
526764 01	40	2	548746 02	38	4	68794	32	6
526764 01	48	2	548746 02	70	15	69016	60	20
526769 84	48	22	549885 80	27	54	69214	30	6
526775 80	26	43	549885 81	27	54	69226	30	5
526775 81	26	43	549888 82	27	54	69263	56	2
526815 02	52	4A	549888 83	27	54	69263	60	2
526815 80	52	4	553171 01	62	6	69270	50	13
527920 01	44	4	553272 01	62	6	69270	68	6
527981 83	40	22	554214 02	62	10	70489	52	4B
527981 85	40	22	555604 04	66	8A	70490	52	4D
527981 85	48	22	556045 80	66	8	70492	34	10
528629 01	64	36	556051 80	66	14	70492	52	4D
529503 02	56	10	557629 80	66	6	70492	56	5
529504 02	56	7	557714 01	62	1	70492	58	4
529733 02	56	3	569415 03	68	14	70492	58	6
531749 01	56	9	589035 01	66	13	70492	60	8
534114 81	56	12	62094	70	17	70492	26	41
534114 81	60	4	62094	27	46	70492	26	42.2
534114 81	60	11	64002	44	21	70492	27	81
534115 81	60	16	64702	40	17	70492	27	85
535741 80	64	10	64702	48	17	70940	40	3
535742 80	64	11	64702	70	1	70940	48	3
535743 04	64	9	64706	70	2	70940	70	3
535743 04	74	1	64706	27	52	71123	26	3
536704 02	26	30	64731	26	39	71124	26	4
537086 07	68	15	65201	42	7	71125	26	6
538535 01	64	33	65201	68	4	71126	26	7
538539 03	64	8	65232	26	2	71349	27	64
538539 05	64	8	65232	72	3	72243	66	2
538574 02	64	31A	65235	72	4	72244	66	3
538574 02	74	2	65235	26	5	72474	26	28
538574 80	64	31	65313	60	15	72474	27	59
541405 01	64	32	65469	36	7	72680	26	27
541405 01	74	9	65586	34	6	72680	27	58
541407 02	54	1	65586	72	2	72719	66	12
543054 01	44	19	66169	62	2	72876	26	33
545019 01	64	4	66169	62	5	72926	52	3
546104 01	50	1	66169	62	8	72933	26	21
546106 80	50	11	66169	64	37	72933	48	29
546229 02	60	13	66554	72	1	72946	34	9
546229 02	60	17	66554	26	9	72946	52	4C
546229 12	56	8	67472	38	5	72946	54	5
546229 12	56	11	67472	40	8	72946	58	7
546229 12	60	3	67472	40	14	72946	27	80
546229 12	60	10	67472	48	8	72946	27	84
546229 20	58	2	67472	48	14	73200	64	19
548051 23	76	2	67477	26	10	73200	64	25

Part No.	Page	Ref.
73376	66	4
73377	66	5
73920	42	10
73920	42	12
73920	70	6
73921	42	11
73921	72	9
74094	50	14
74095	50	14
74099	50	14
7440219 02	50	7
7440219 03	50	8
7440220 02	50	15
7440252 80	50	2
7440262 02	42	6
7440267 02	50	9
75085	50	14
75091	50	14
75099	34	2
75099	72	8
8115	32	5
8132	40	6
8132	48	6
8132	70	13
8341	32	2AA
8341	68	12A
8859	26	15
8859	72	7
9175	26	16
9281	44	22
9684	38	8
9684	70	12
9699	38	6C
9699	72	11